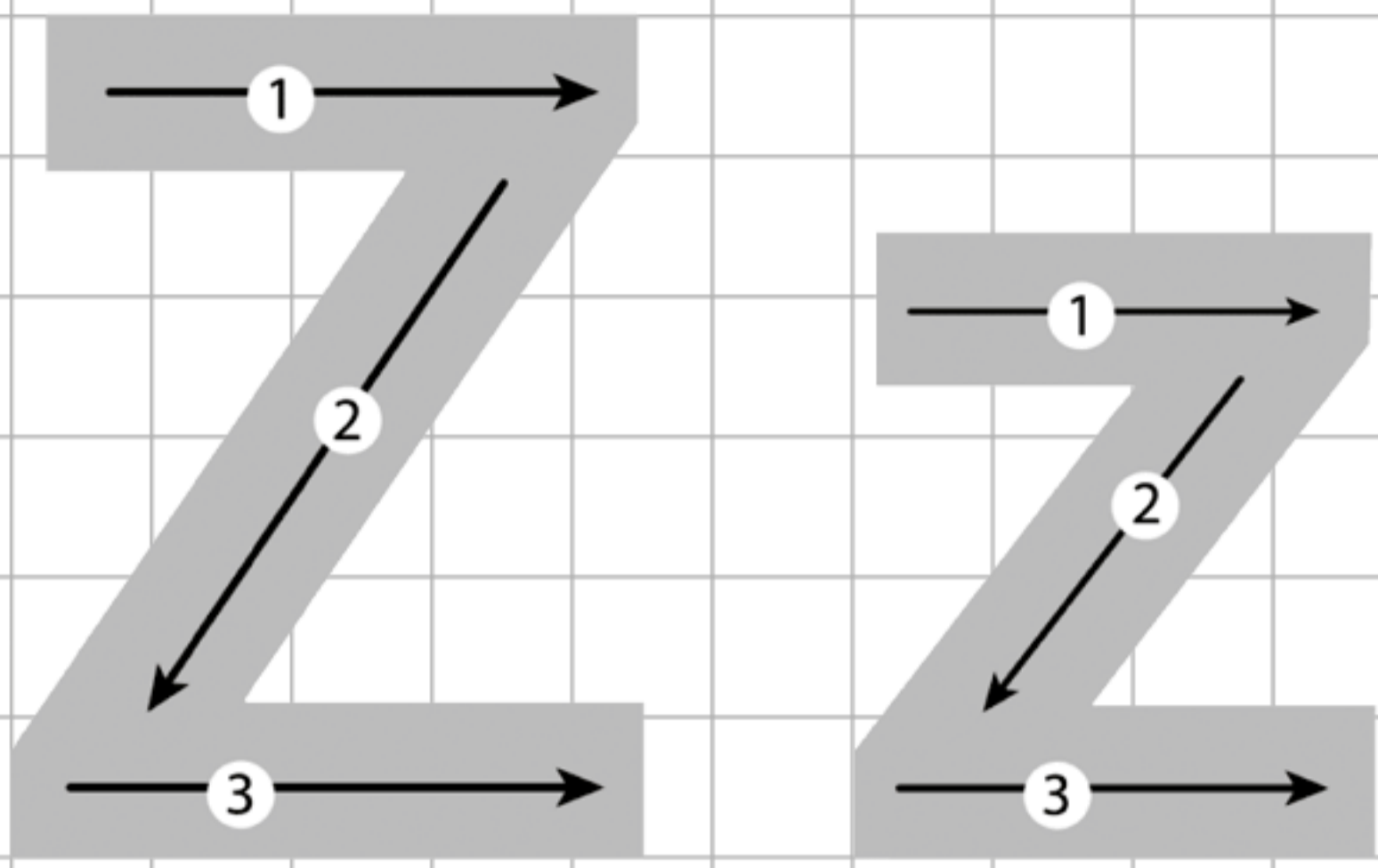
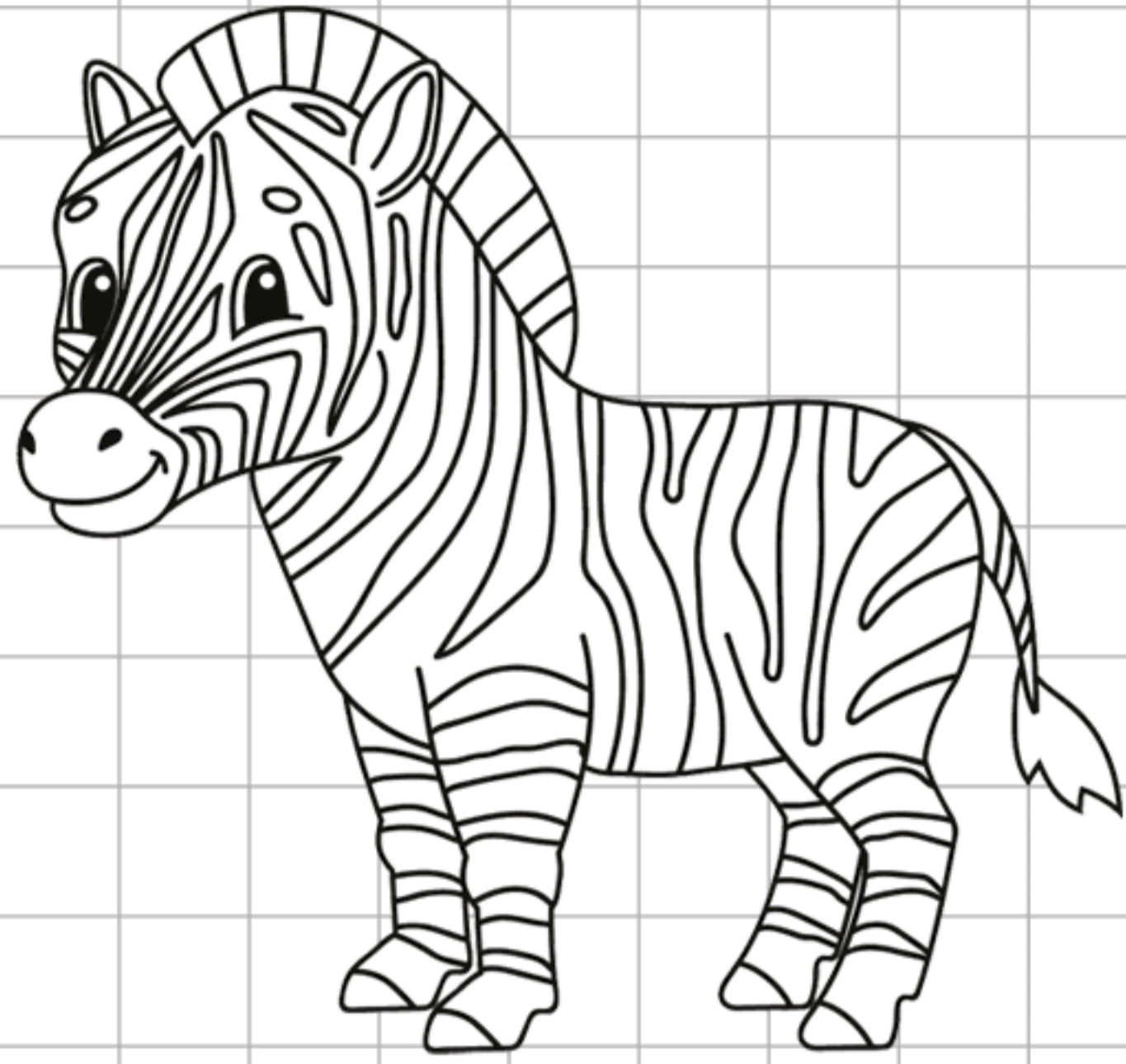


LA LETTERA Z

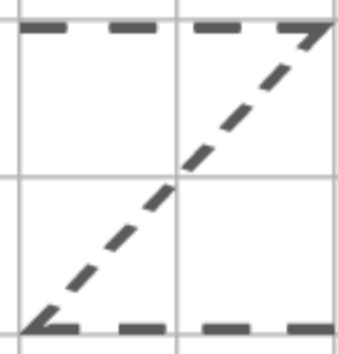
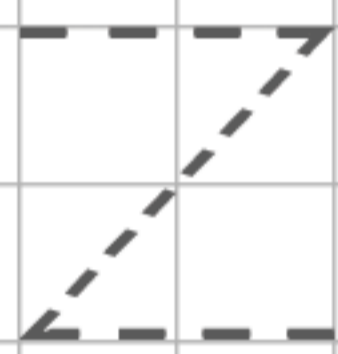
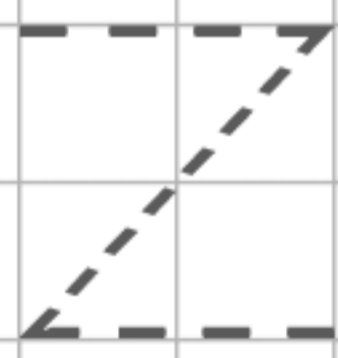
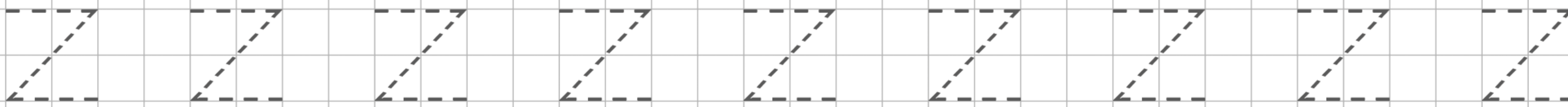


ZEBRA

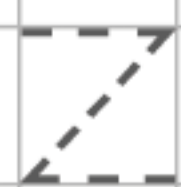
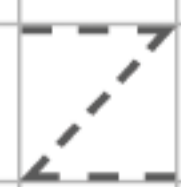
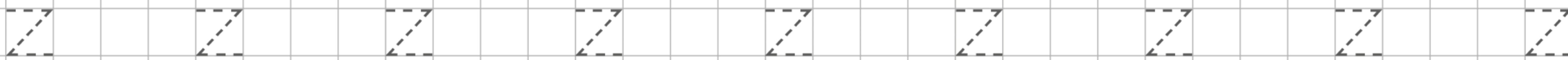


• RIPASSA I TRATTEGGI E CONTINUA TU A SCRIVERE

Z IN STAMPATELLO MAIUSCOLO



z in stampatello minuscolo



LA LETTERA Z

• RIPASSA E COLORA SOLO I CERCHI CHE CONTENGONO **Z** E **z**.

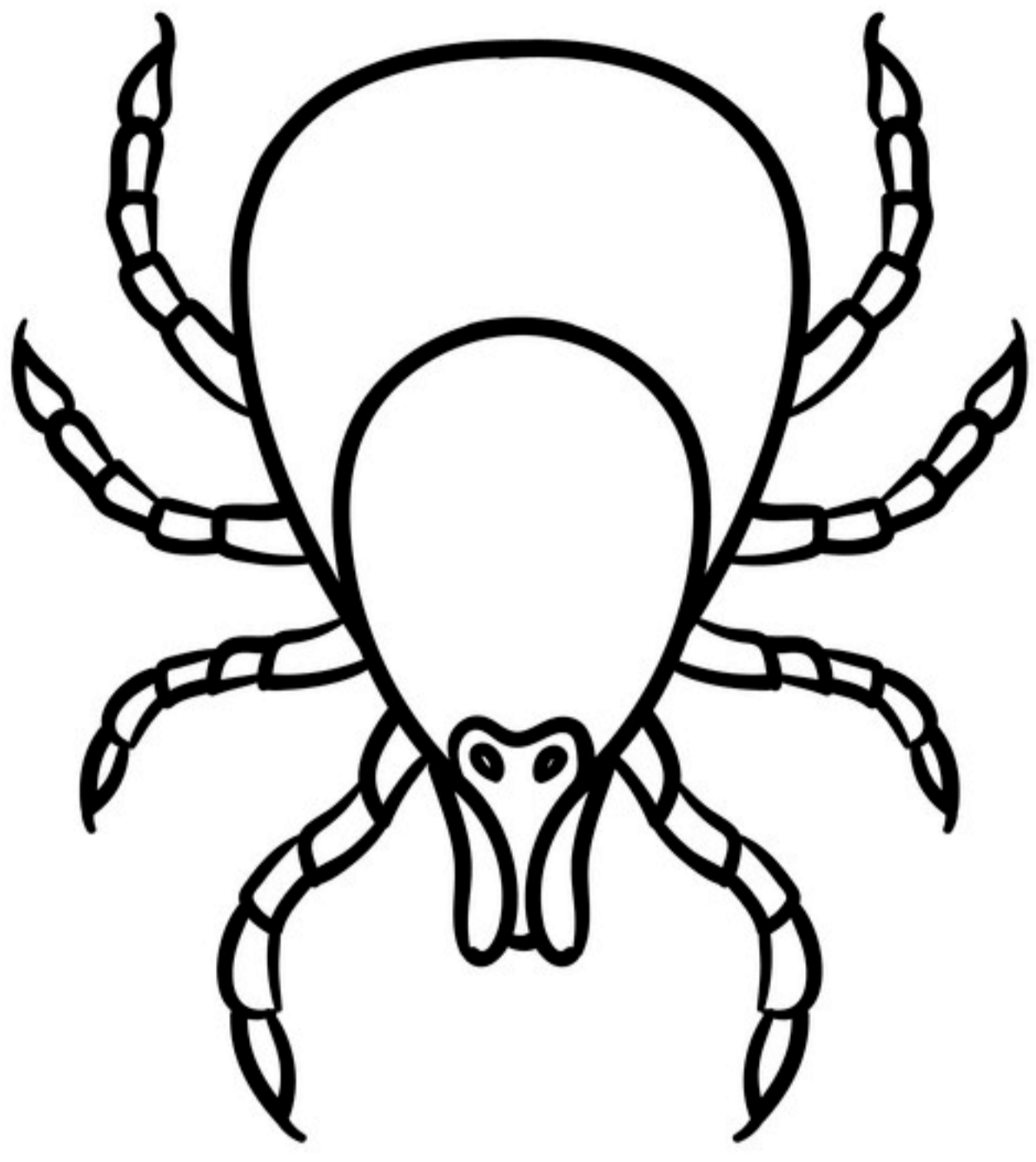
A large central box containing the letters 'Zz' in a bold, black font. Surrounding this box are various letters in circles: 'z', 'Q', 'z', 'b', 'Z', 'H', 'r', 'q', 'D', 'I', 'm', 'Z', 'P', 'w', 'Z', 'Z', 'z', 'Y', 'J', 'D', 'f', 'a', 'C', 'z', 'k', 'd', 'z', 'Y', 'G', 'u', 'Z'.

• CONFRONTA **MAIUSCOLO** E **minuscolo** E RIPASSA LE PAROLE.

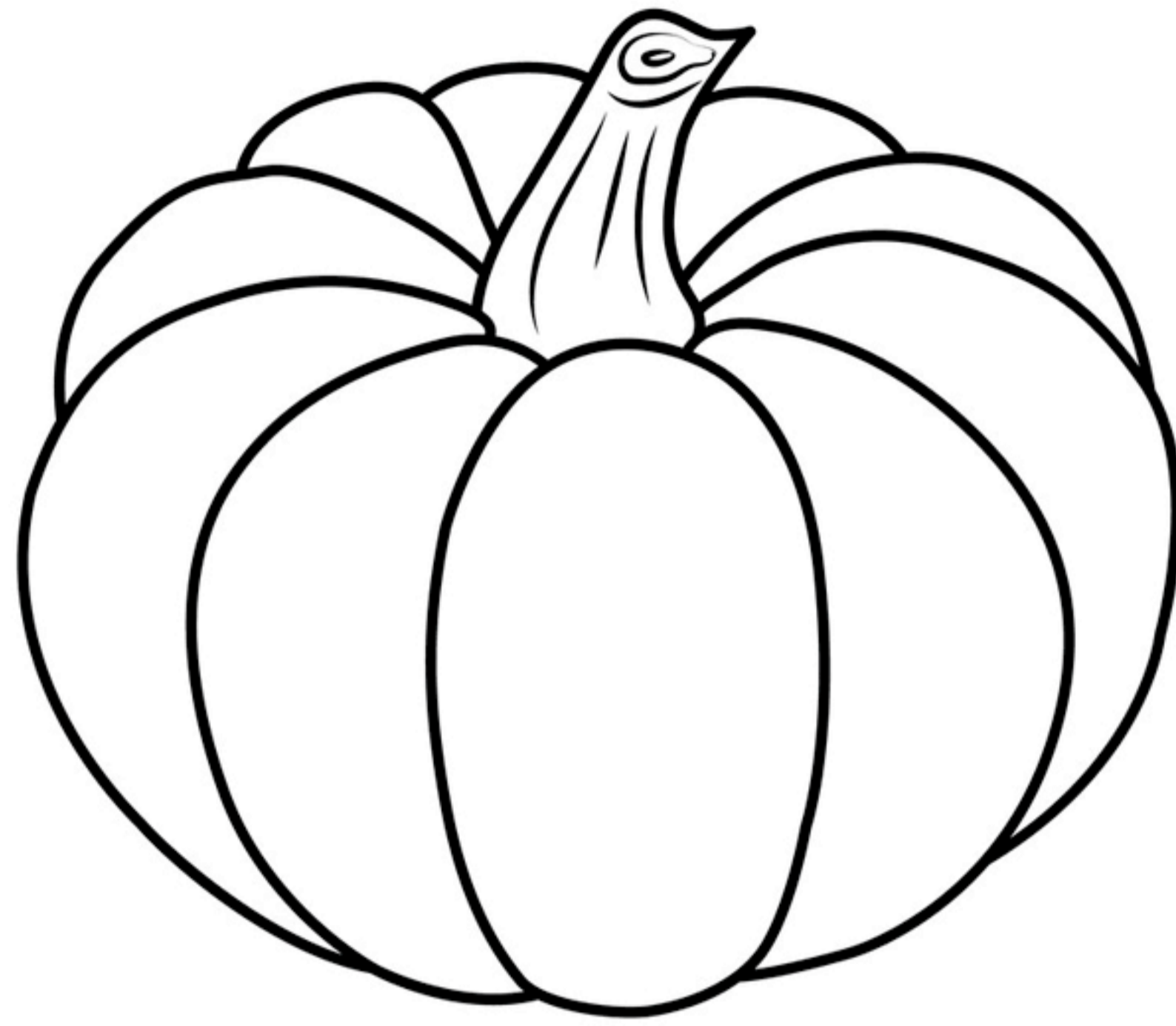
Three sets of illustrations and words for tracing. 1. A zipper with the word 'ZIP' and 'zip' in dashed lines. 2. A zoo entrance with the word 'ZOO' and 'zoo' in dashed lines. 3. A ginger root with the word 'ZENZERO' and 'zenzero' in dashed lines. 4. A raft with the word 'ZATTERA' and 'zattera' in dashed lines.

LA LETTERA Z

- COLORA I DISEGNI E COMPLETA LE PAROLE CON **Z** o **z**.



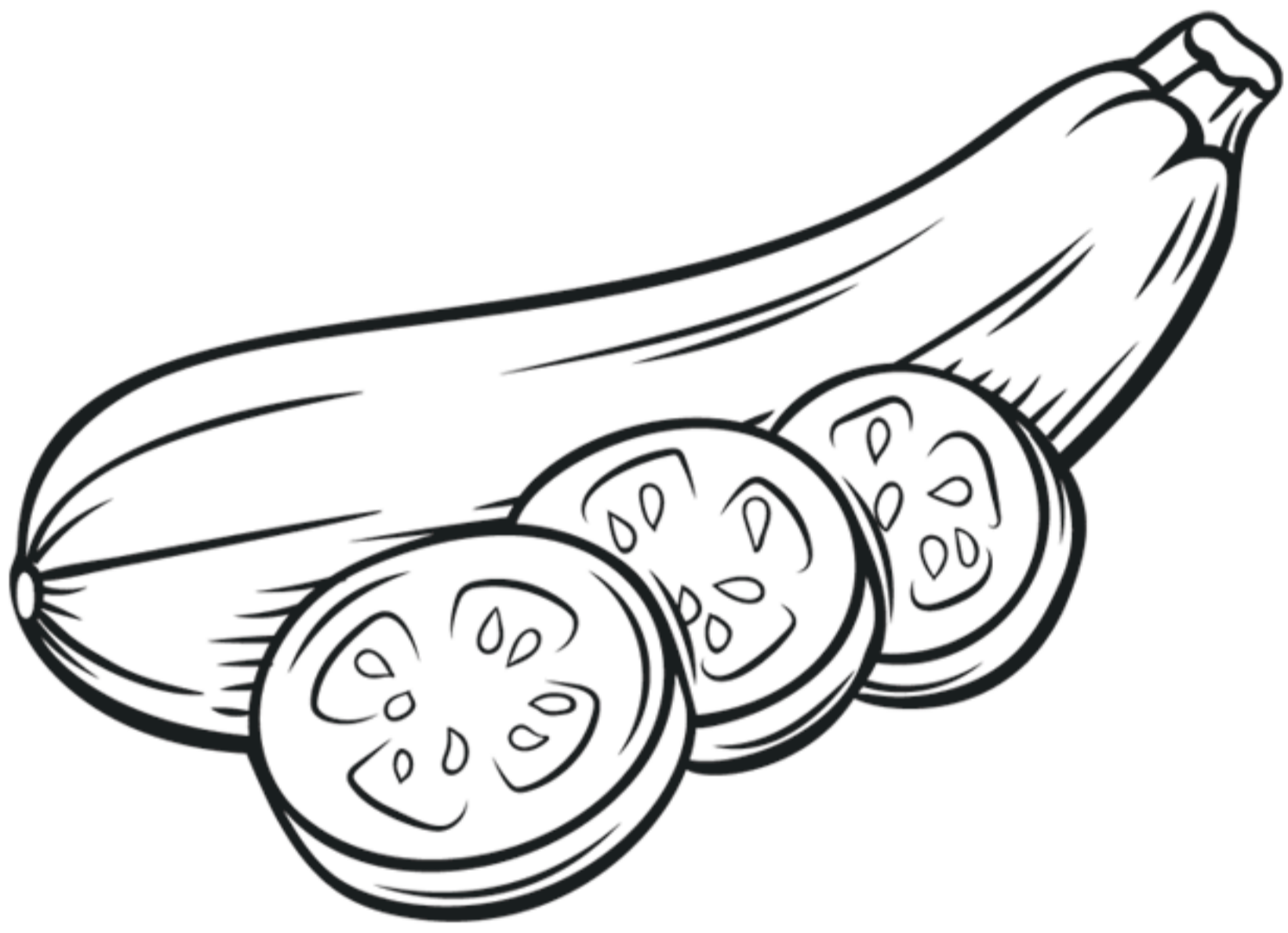
_ecca



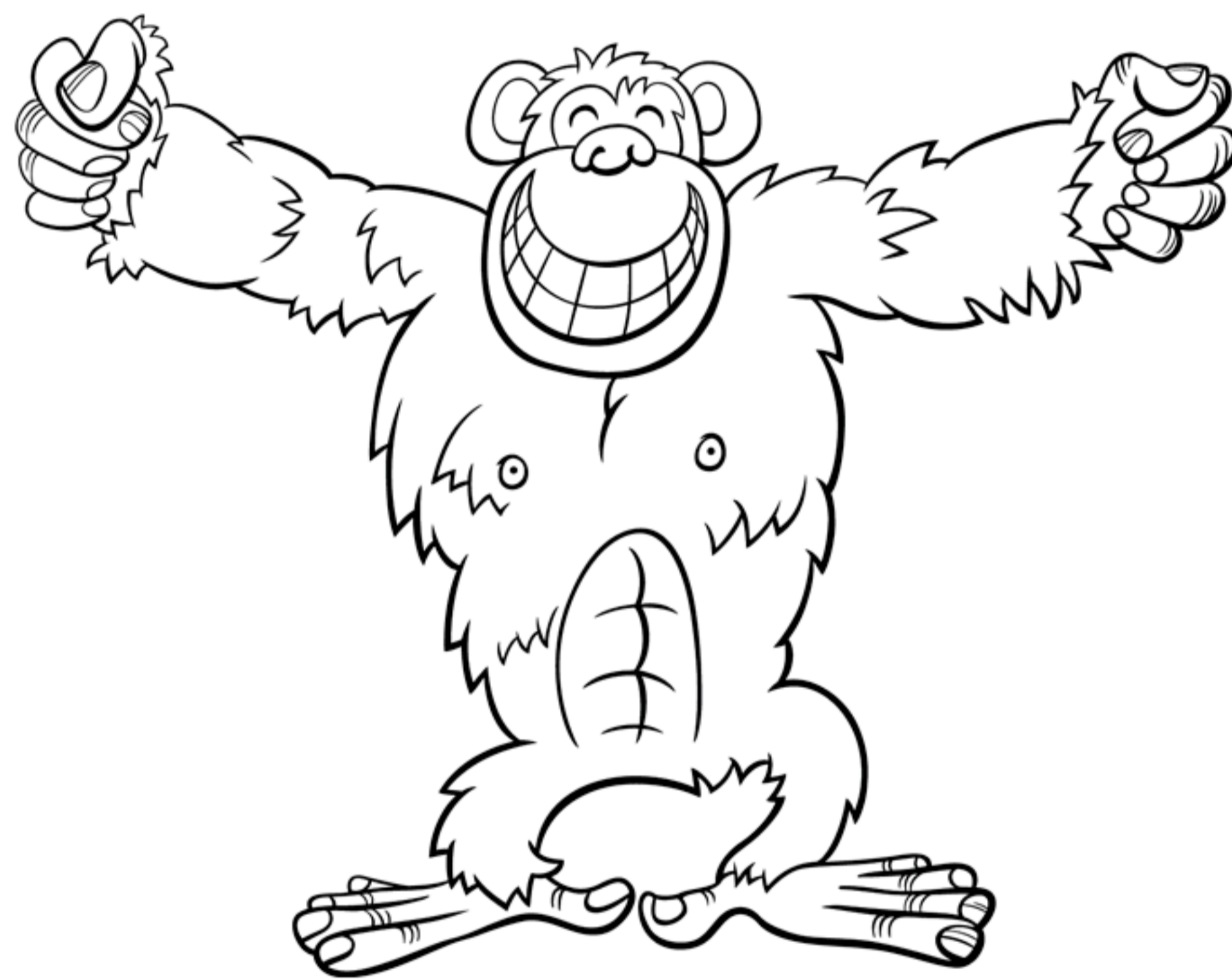
_UCCA



_AINO



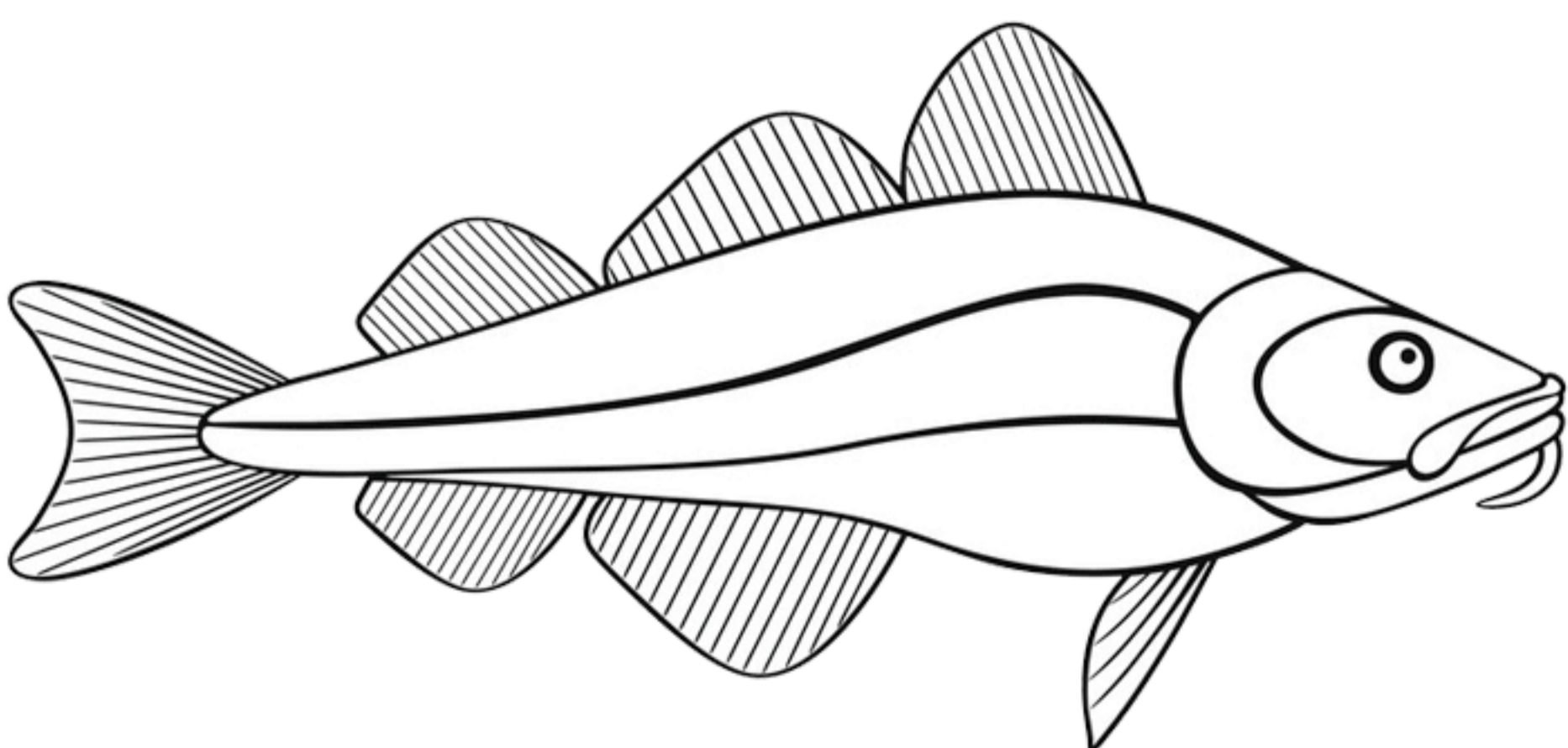
_ucchina



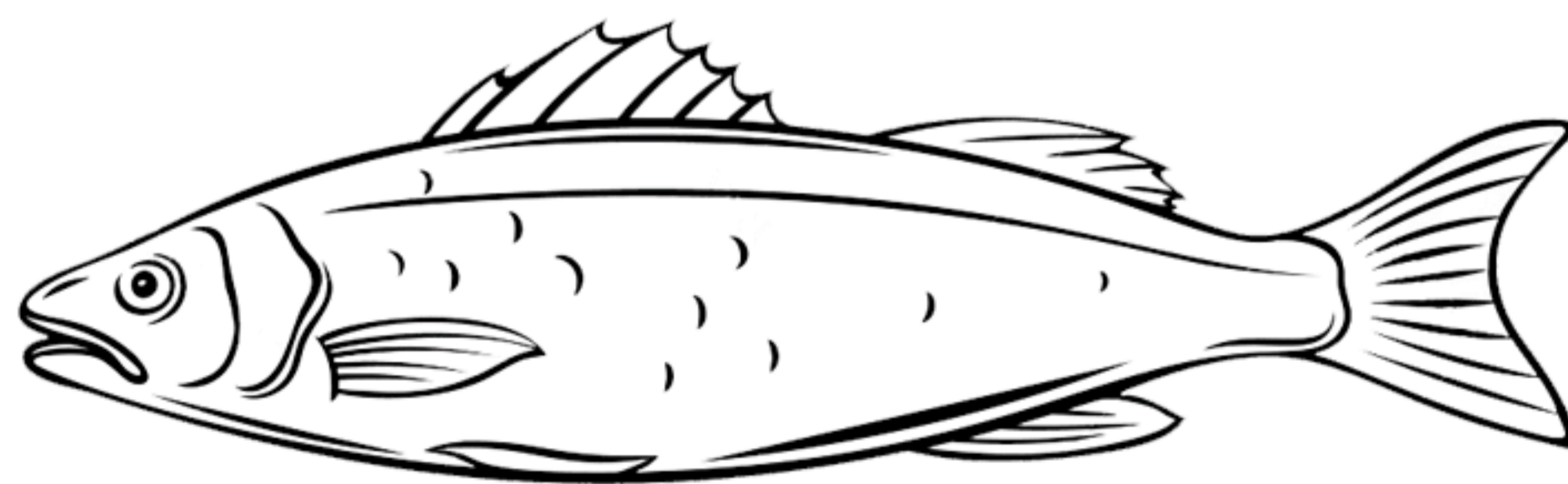
scimpan_é



CAL_INI



merlu__o



BRAN_INO



PU__OLA