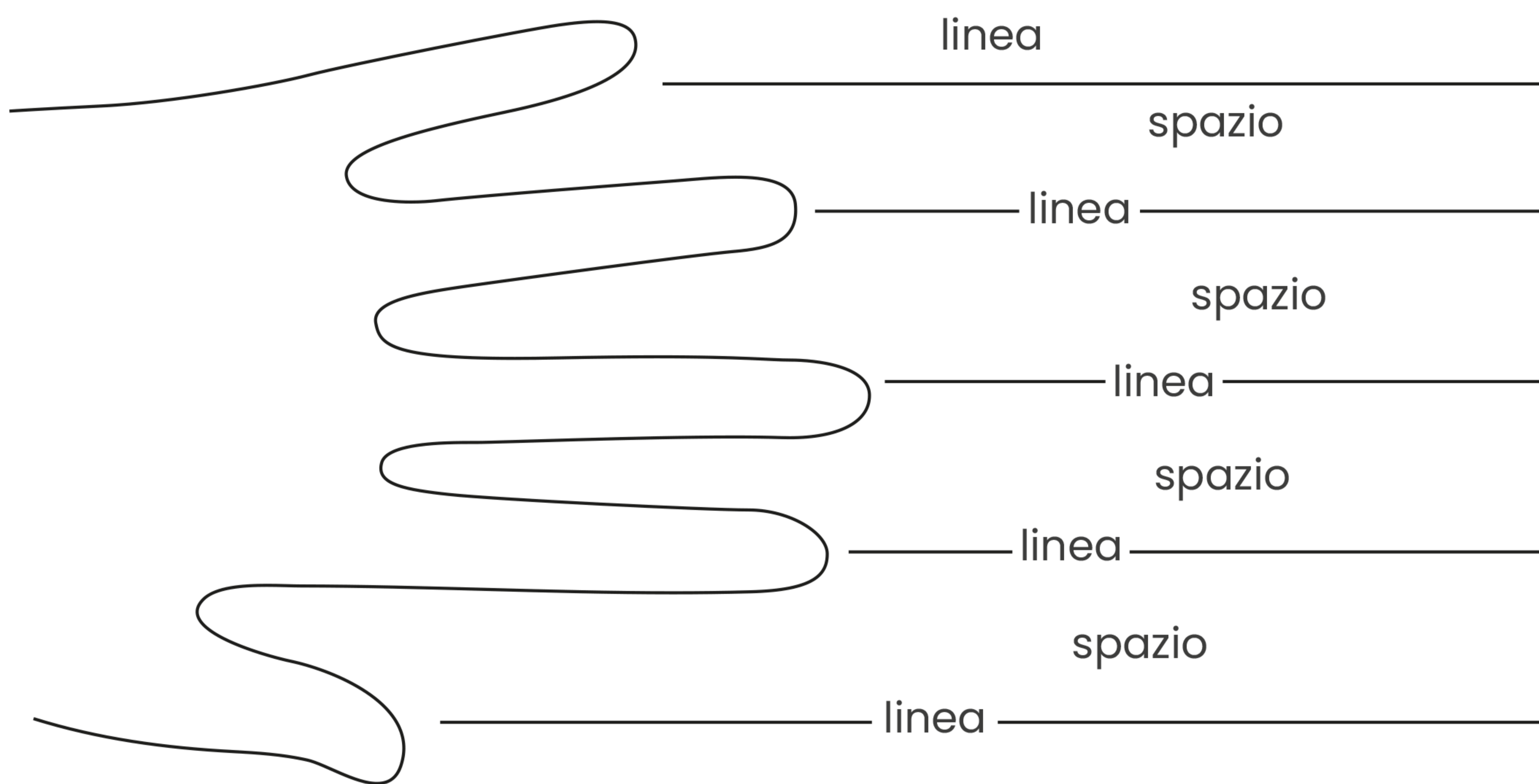


IL PENTAGRAMMA

Il **pentagramma** è il rigo musicale dove si scrivono le note ed è formato da 5 linee e 4 spazi.

■ L'idea del pentagramma nasce dalle dita della mano: osserva.



▲ Ripassa i puntini del pentagramma, come nell'esempio.



IL PENTAGRAMMA

Il **pentagramma** è il **rigo musicale** dove si scrivono le **note**. È formato da 5 linee e 4 spazi, che si contano dal basso verso l'alto.

Le **note musicali** sono segni che indicano suoni e si scrivono nel pentagramma sulle linee oppure negli spazi.

Le 7 note DO, RE, MI, FA, SOL, LA, SI danno il nome a infiniti suoni.



■ Completa le scale scrivendo il nome delle note mancanti: attenzione al senso!

SENSO ASCENDENTE

DO — — — — — SI

A musical staff with a treble clef. The notes are placed on the lines and spaces from bottom to top: DO (1st space), RE (2nd line), MI (2nd space), FA (3rd line), SOL (3rd space), LA (4th line), SI (4th space).

SENSO DISCENDENTE

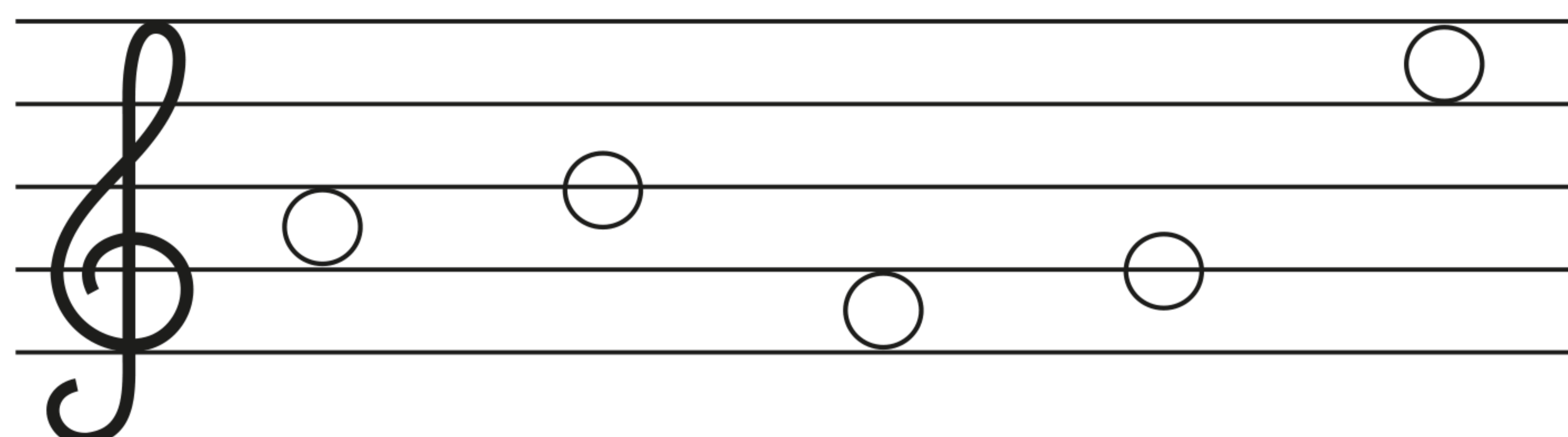
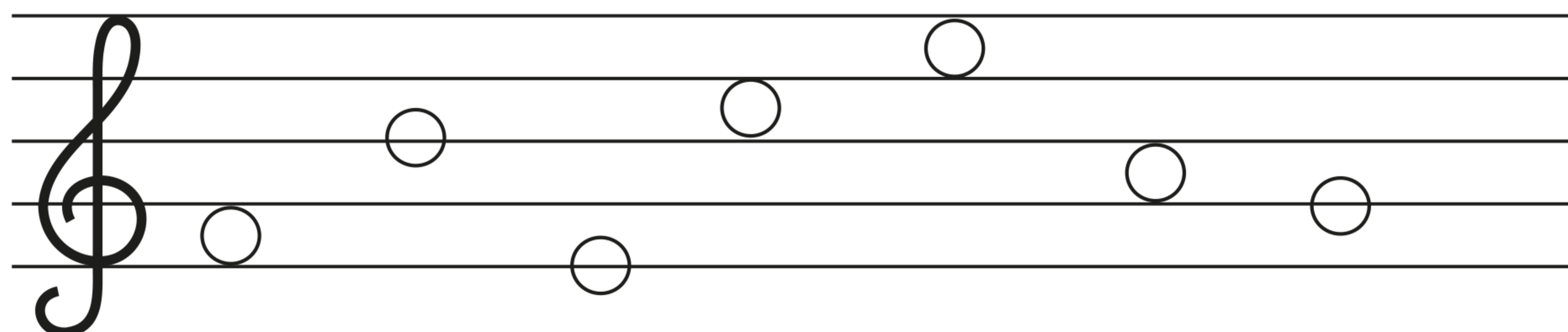
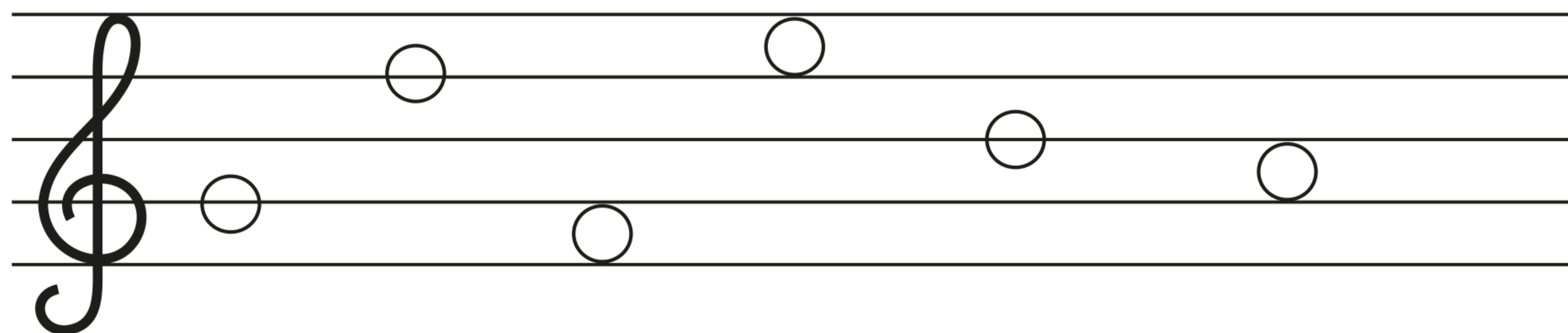
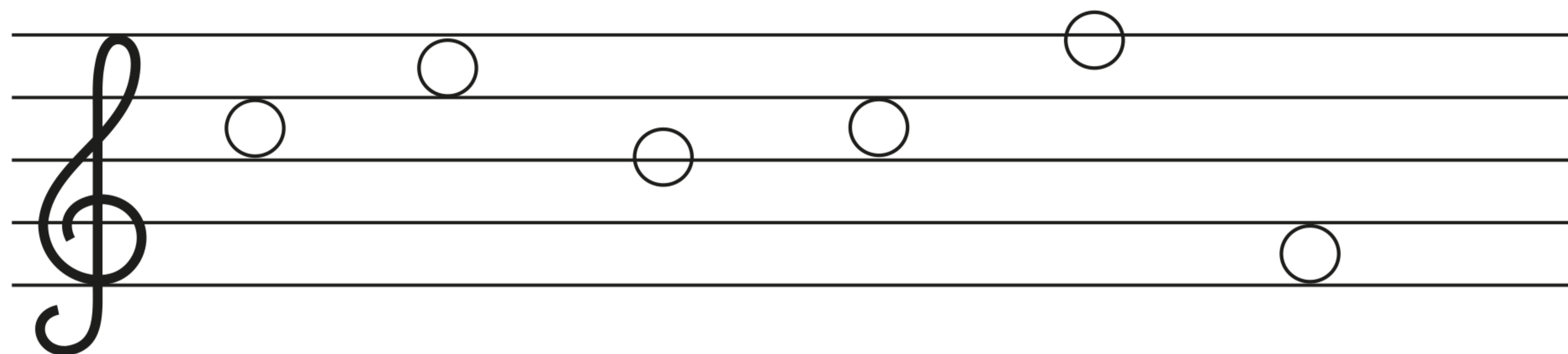
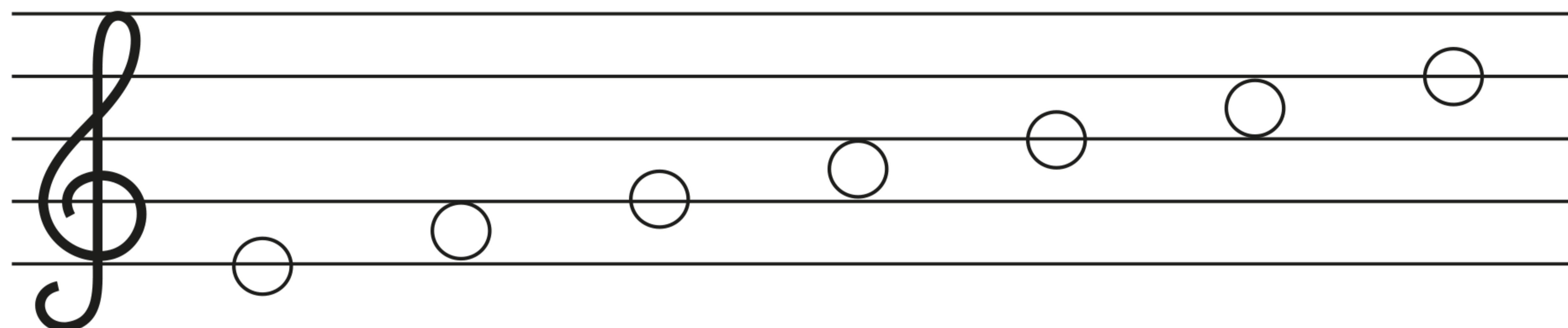
SI — — — — — DO

A musical staff with a treble clef. The notes are placed on the lines and spaces from top to bottom: SI (4th space), LA (4th line), SOL (3rd space), FA (3rd line), MI (2nd space), RE (2nd line), DO (1st space).

LE NOTE MUSICALI

Le **note musicali** sono segni che indicano suoni e si scrivono nel pentagramma sulle linee oppure negli spazi. In tutto le note sono soltanto 7 (DO, RE, MI, FA, SOL, LA, SI), ma danno il nome a infiniti suoni!

■ Colora di blu le note sulle linee e di rosso le note negli spazi.



CURIOSITÀ

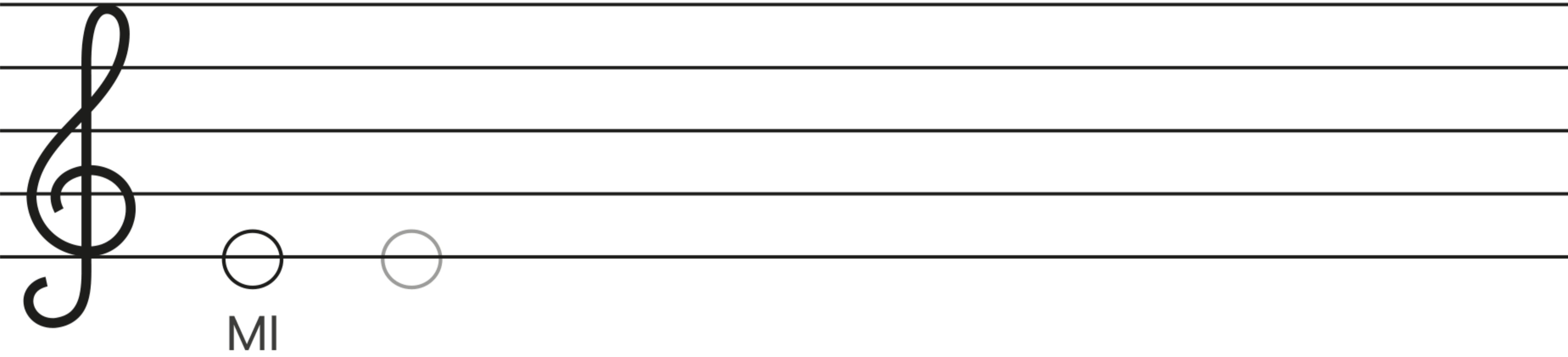


In principio la nota DO si chiamava UT.

LE NOTE MUSICALI


- Ricopia più volte sul pentagramma la prima nota indicata, lasciando un po' di spazio tra una nota e l'altra.

1ª linea




MI

2ª linea



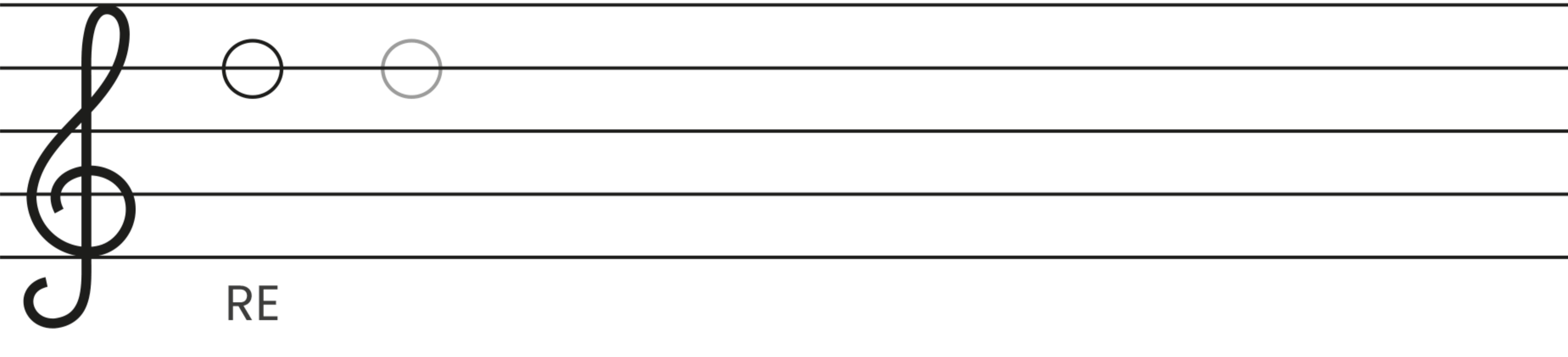
SOL

3ª linea



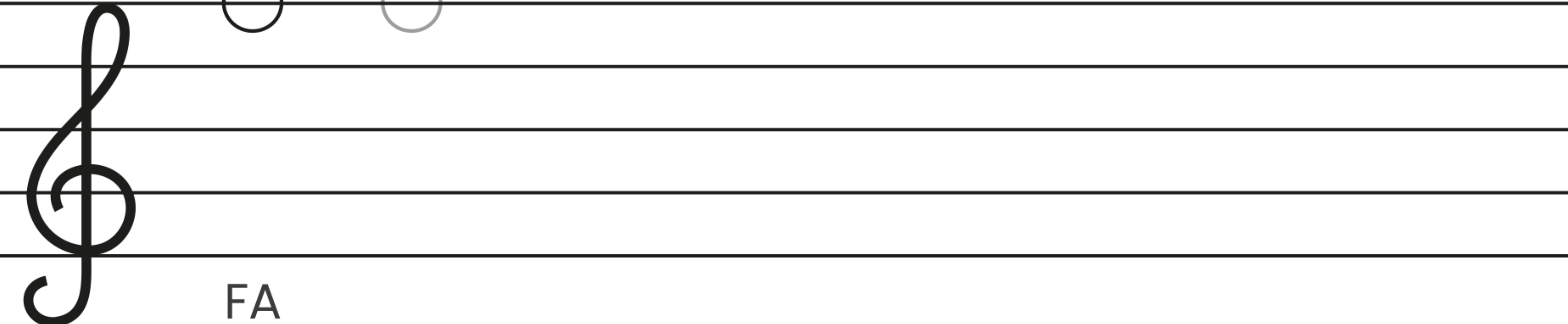
SI

4ª linea



RE

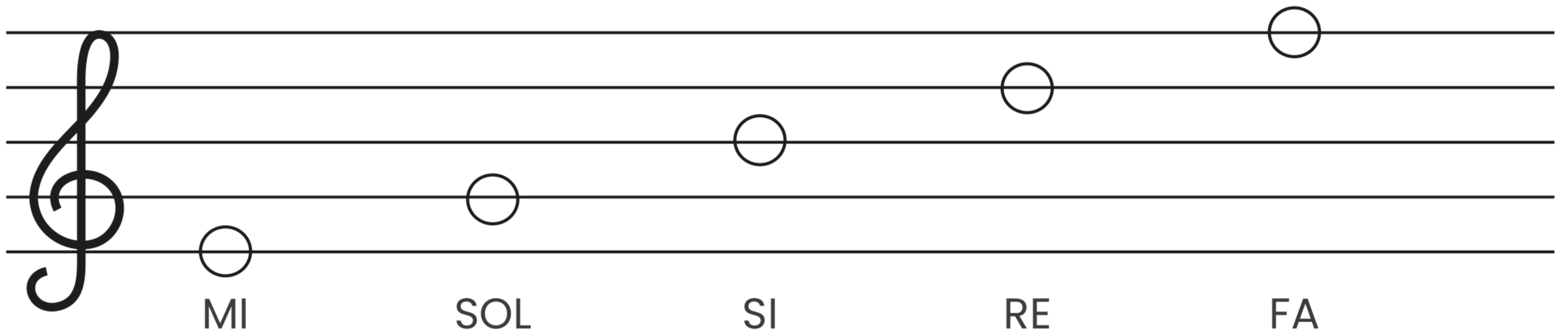
5ª linea



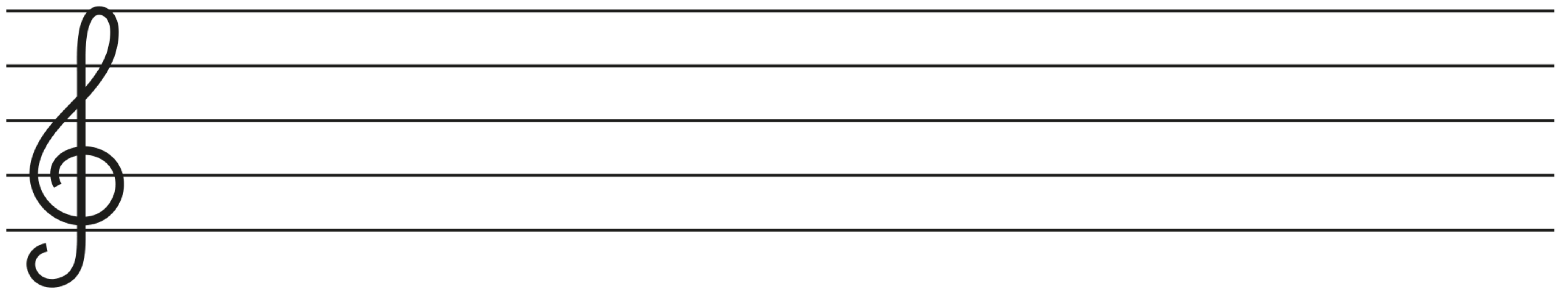
FA

LE NOTE MUSICALI

▲ Ricopia le note nel rigo sotto.



A musical staff with a treble clef. Five notes are placed on the lines: MI (first line), SOL (second line), SI (third line), RE (fourth line), and FA (fifth line). Each note is a simple circle with a vertical line through its center.



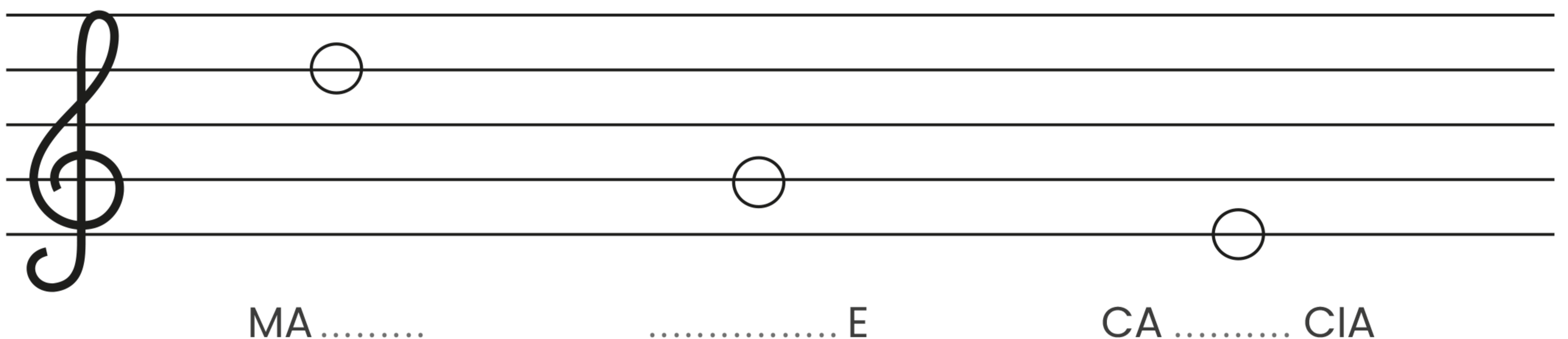
An empty musical staff with a treble clef, intended for copying the notes from the previous staff.

● Scrivi le note nel posto esatto sul pentagramma.



A musical staff with a treble clef. Five labels are placed below the lines: SOL (first line), SI (second line), MI (third line), FA (fourth line), and RE (fifth line).

✿ Rebus musicale! Inserisci i nomi delle note scritte sul pentagramma per completare le parole.

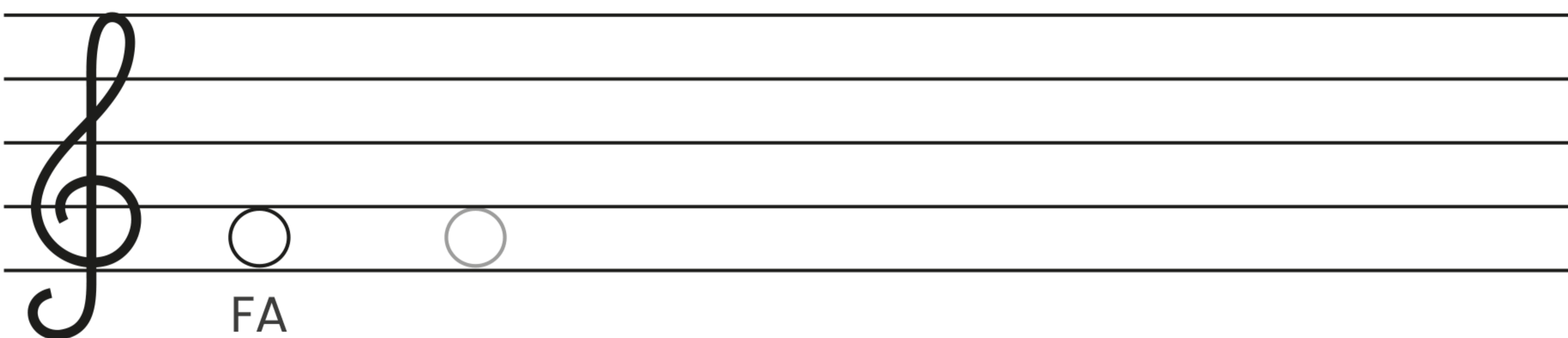


A musical staff with a treble clef. Three notes are placed on the lines: MI (second line), SI (third line), and RE (fifth line). Below the staff, three words are written with gaps: "MA", "..... E", and "CA CIA".

LE NOTE MUSICALI

- Ricopia più volte sul pentagramma la prima nota indicata, lasciando un po' di spazio tra una nota e l'altra.

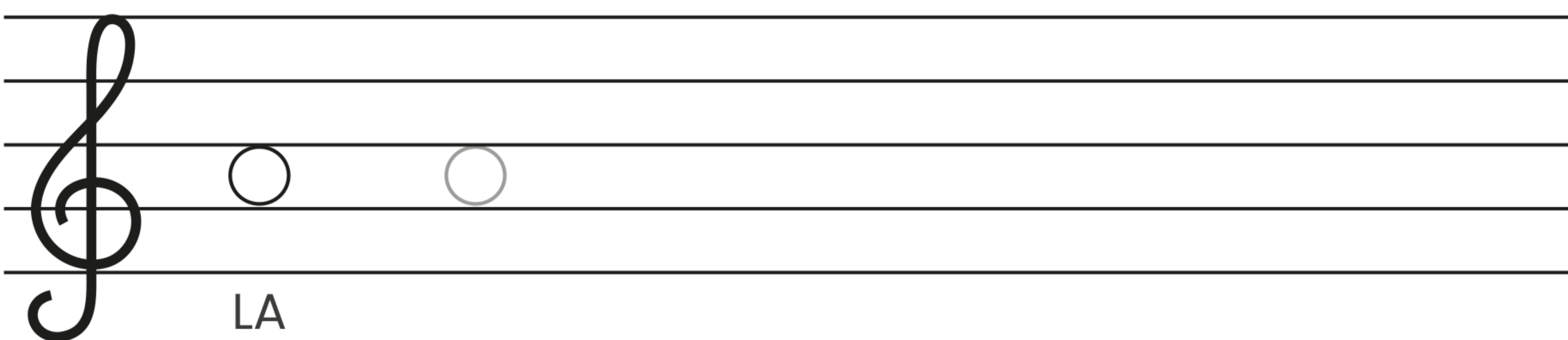
1° spazio



FA

A musical staff with a treble clef. The first space (between the first and second lines) contains a circle representing a note. Below the staff, the letter 'FA' is written. To the left of the staff, the text '1° spazio' is written.


2° spazio



LA

A musical staff with a treble clef. The second space (between the second and third lines) contains a circle representing a note. Below the staff, the letter 'LA' is written. To the left of the staff, the text '2° spazio' is written.

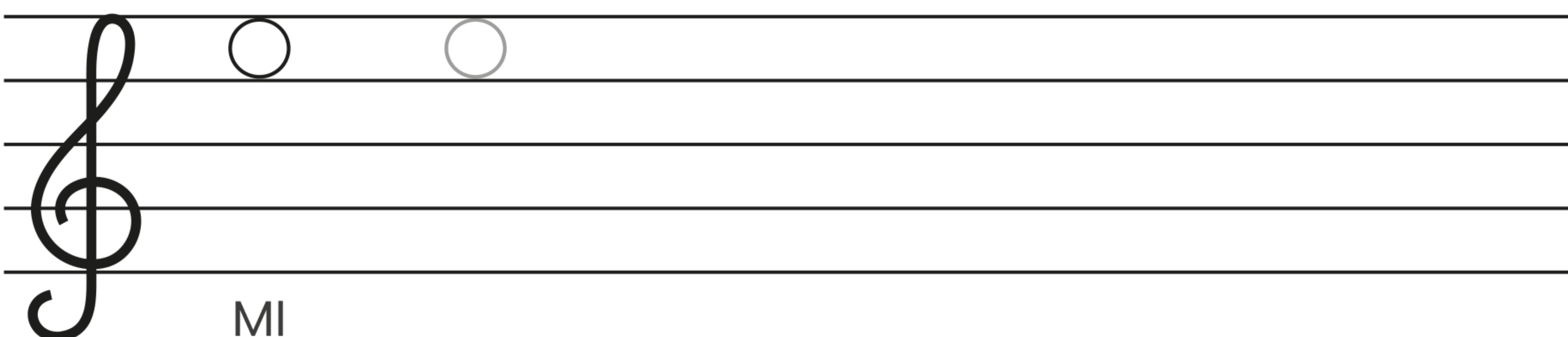
3° spazio



DO

A musical staff with a treble clef. The third space (between the third and fourth lines) contains a circle representing a note. Below the staff, the letter 'DO' is written. To the left of the staff, the text '3° spazio' is written.

4° spazio

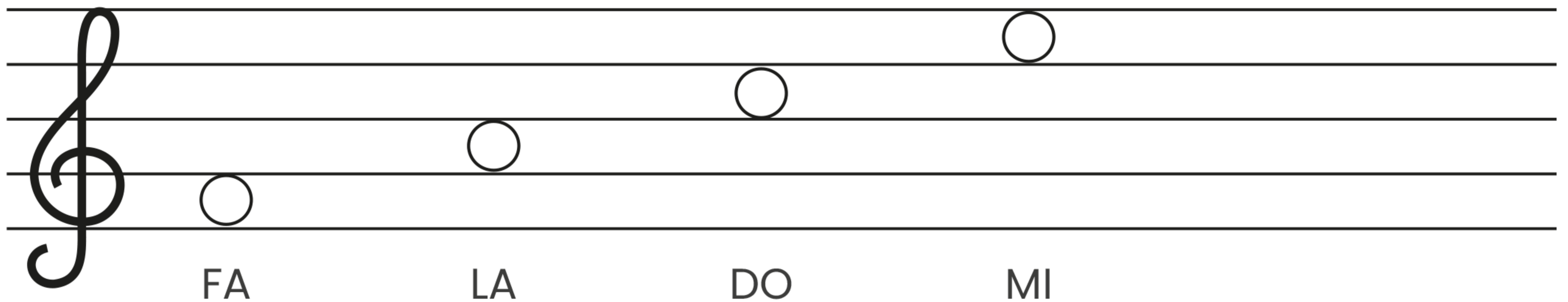


MI

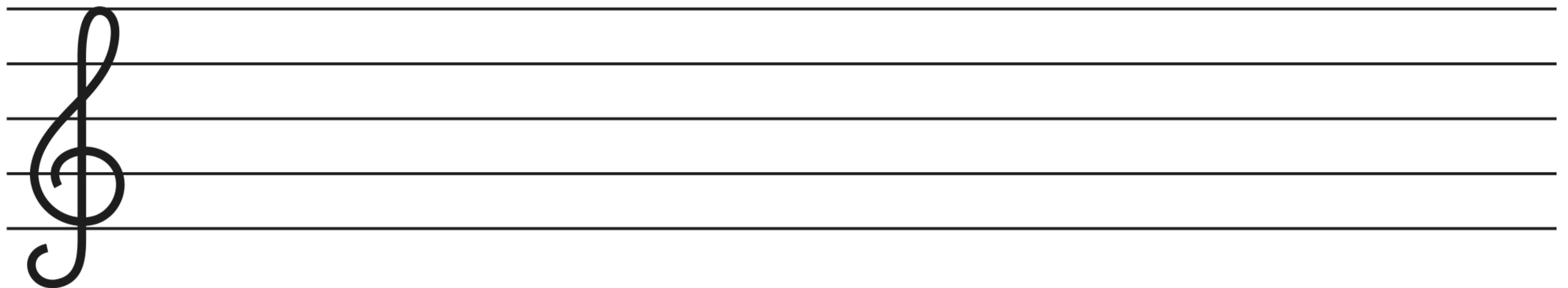
A musical staff with a treble clef. The fourth space (between the fourth and fifth lines) contains a circle representing a note. Below the staff, the letter 'MI' is written. To the left of the staff, the text '4° spazio' is written.

LE NOTE MUSICALI

▲ Ricopia le note nel rigo sotto.

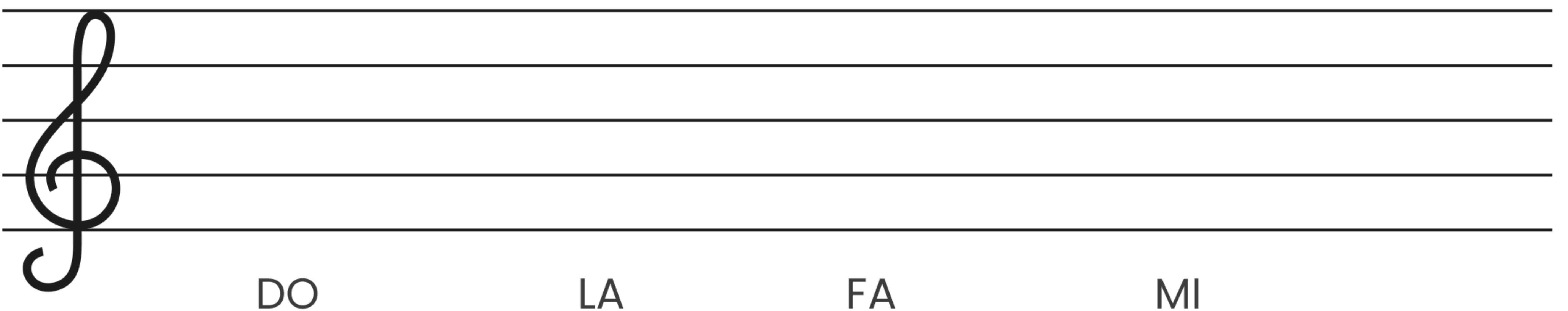


A musical staff with a treble clef. Four notes are placed on the lines: FA on the first line, LA on the second line, DO on the third line, and MI on the fourth line.



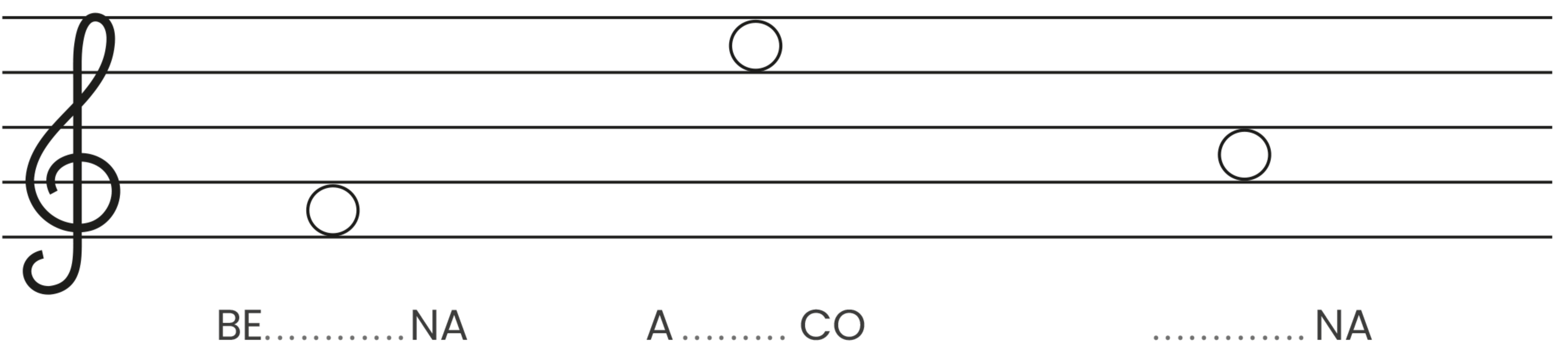
An empty musical staff with a treble clef, intended for copying the notes from the previous staff.

■ Scrivi le note nel posto esatto sul pentagramma.



A musical staff with a treble clef. Labels are placed on the lines: DO on the first line, LA on the second line, FA on the third line, and MI on the fourth line.


▲ Rebus musicale! Inserisci i nomi delle note scritte sul pentagramma per completare le parole.



A musical staff with a treble clef. Three notes are placed on the lines: one on the first line, one on the third line, and one on the fourth line. Below the staff are three words with missing letters: BE.....NA, A..... CO, and NA.

LE NOTE MUSICALI


Scrivi le note al posto esatto sul pentagramma.




SOL MI SI FA DO



LA RE FA MI SOL



DO FA RE SI MI



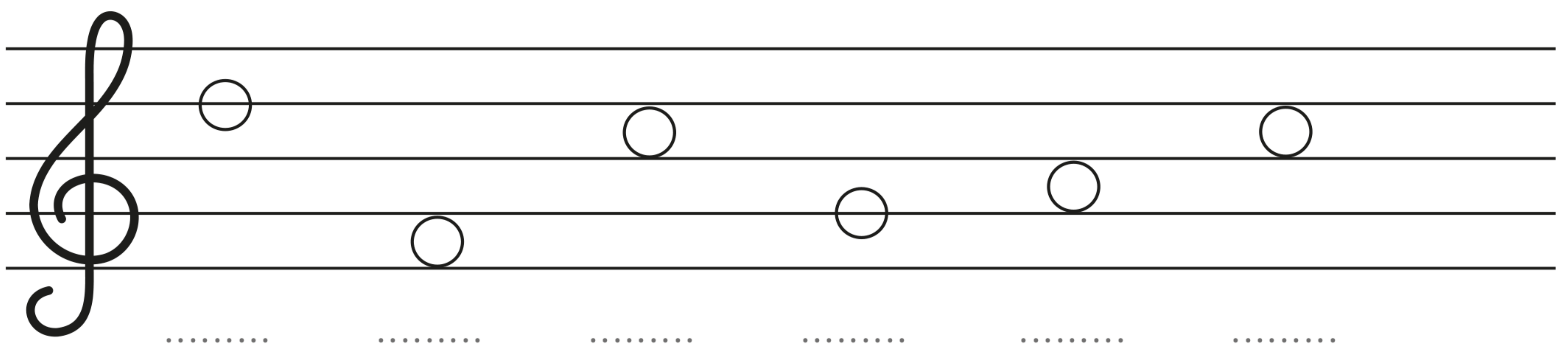
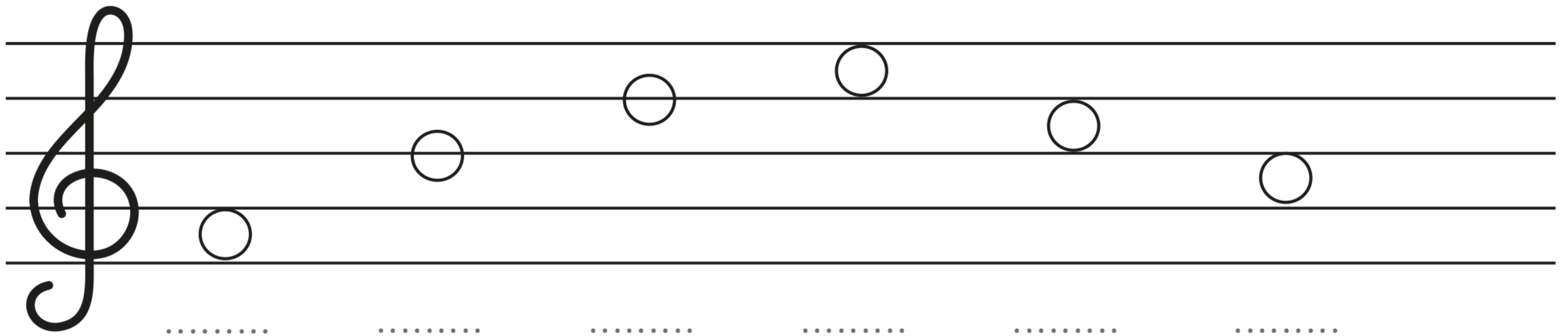
RE LA SOL DO FA



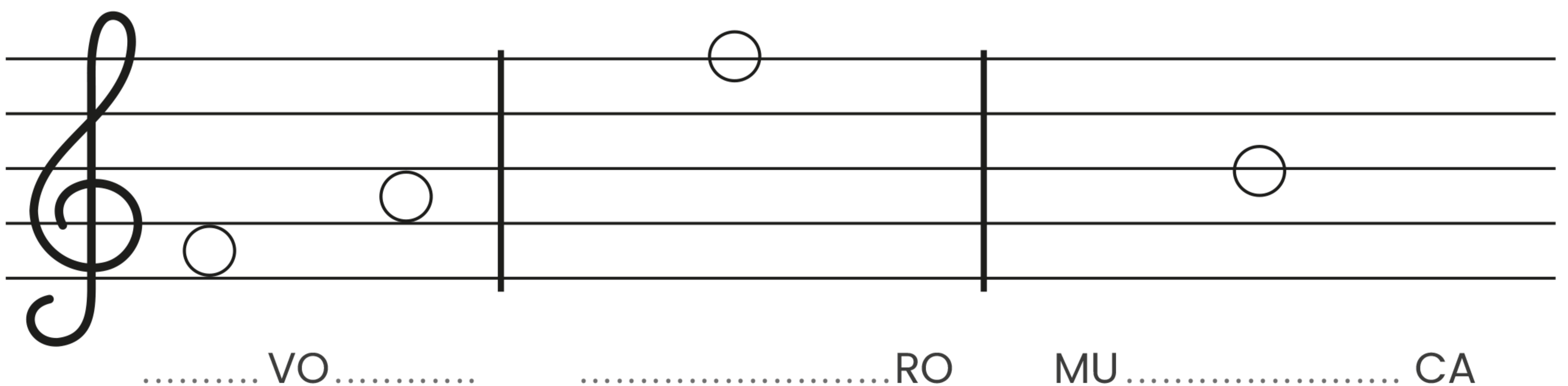
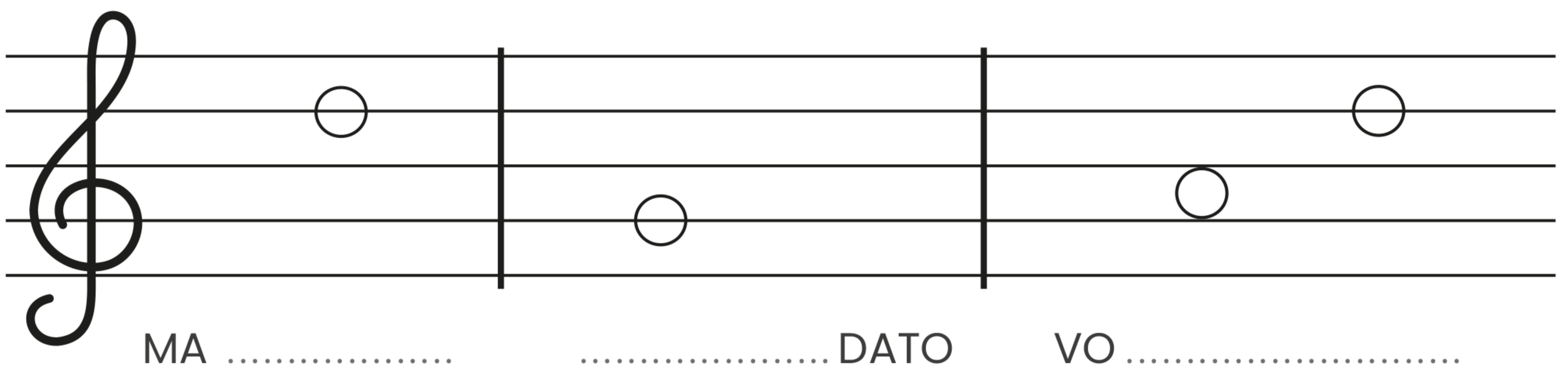
SI MI FA LA RE

LE NOTE MUSICALI

Scrivi il nome alle note.

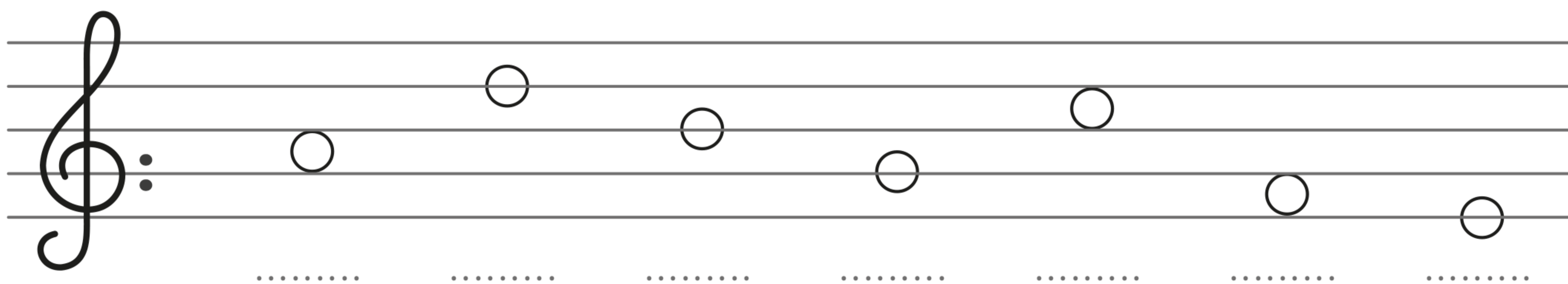
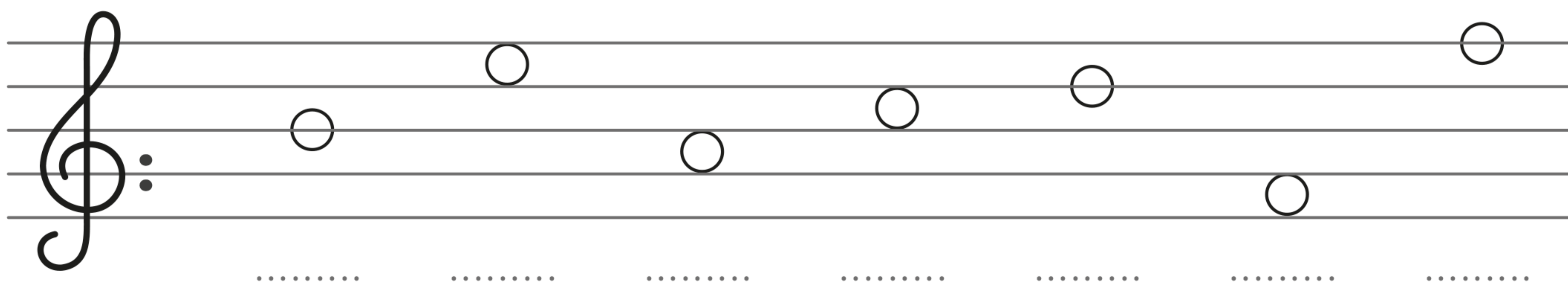
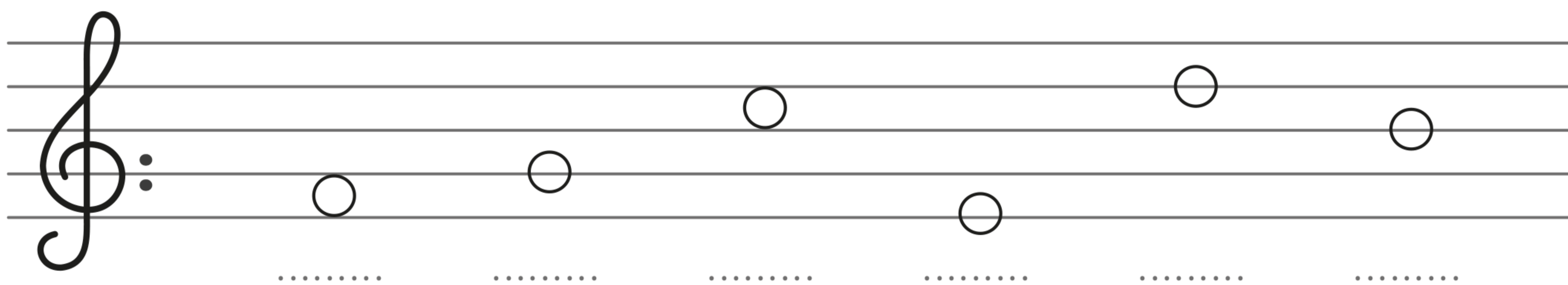
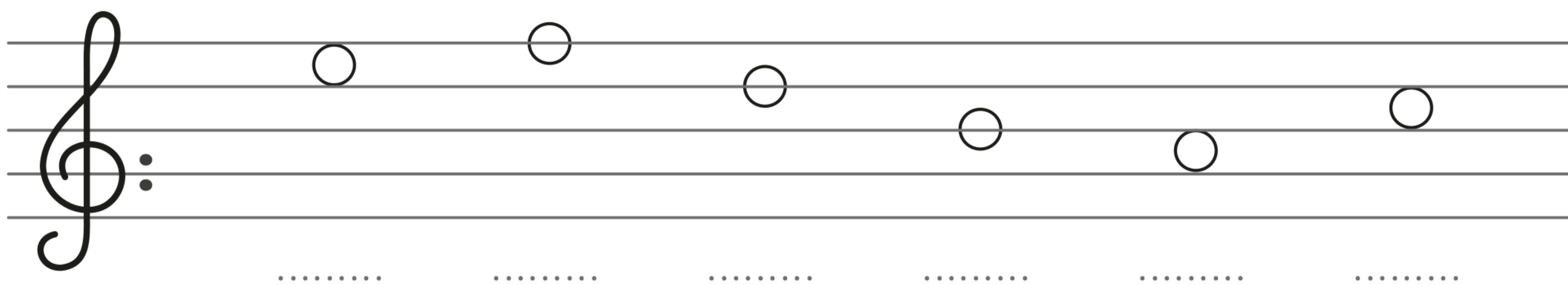
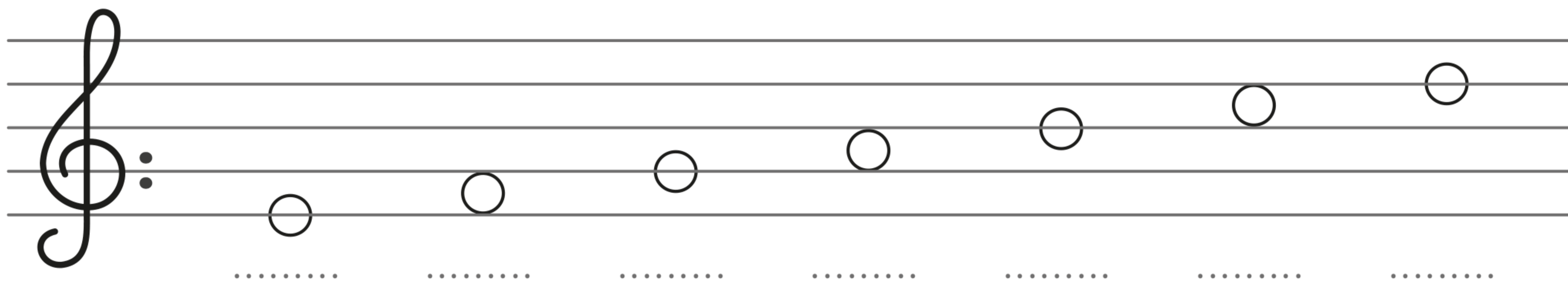


Rebus musicale! Inserisci i nomi delle note scritte sul pentagramma per completare le parole.



LE NOTE MUSICALI

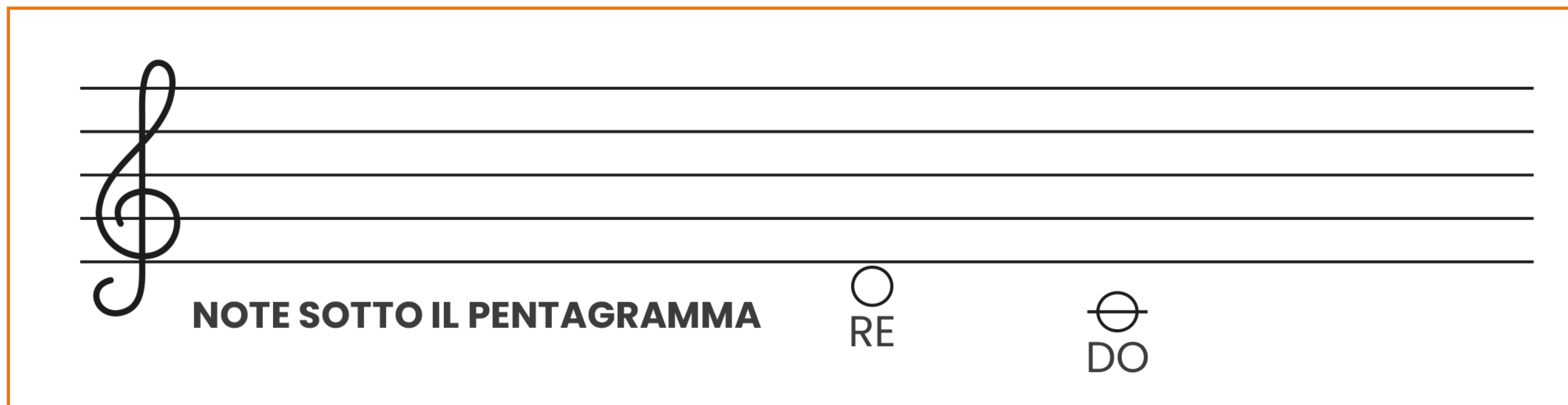
Scrivi il nome alle note.



LE NOTE MUSICALI

NOTE FUORI DAL PENTAGRAMMA

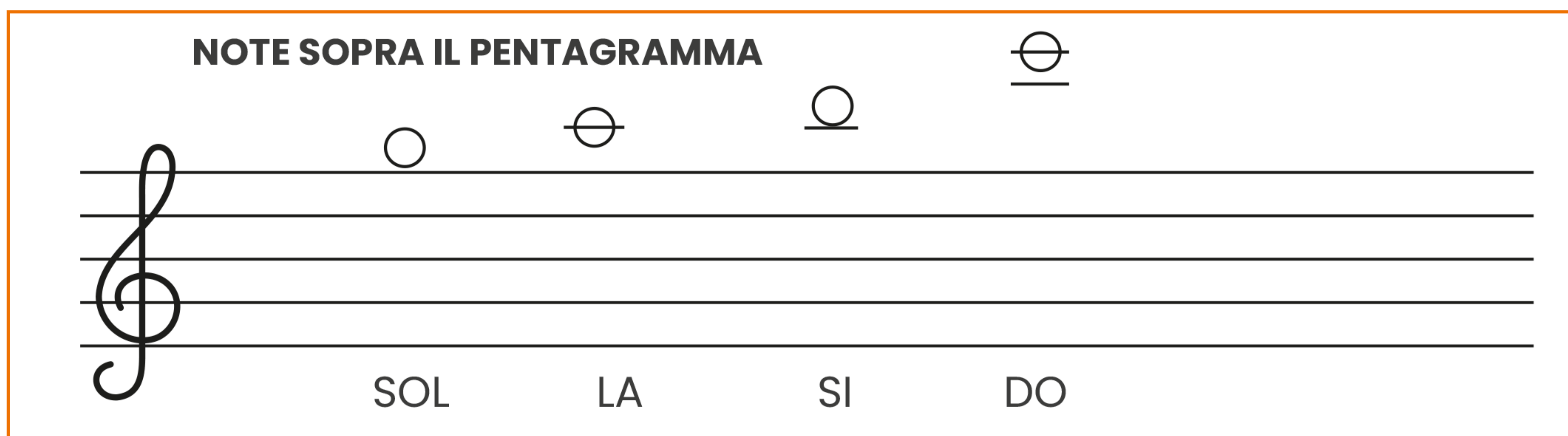
I **tagli additionali** sono dei frammenti di pentagramma usati per riconoscere meglio le note sopra o sotto il pentagramma. I tagli si dicono "in testa" se tagliano la nota a metà e "in gola" se stanno sotto la nota.



NOTE SOTTO IL PENTAGRAMMA

RE DO

A musical staff with a treble clef. Below the staff, the text "NOTE SOTTO IL PENTAGRAMMA" is written. To the right, there are two notes: "RE" represented by a circle with a horizontal line through its center, and "DO" represented by a circle with a horizontal line below it.

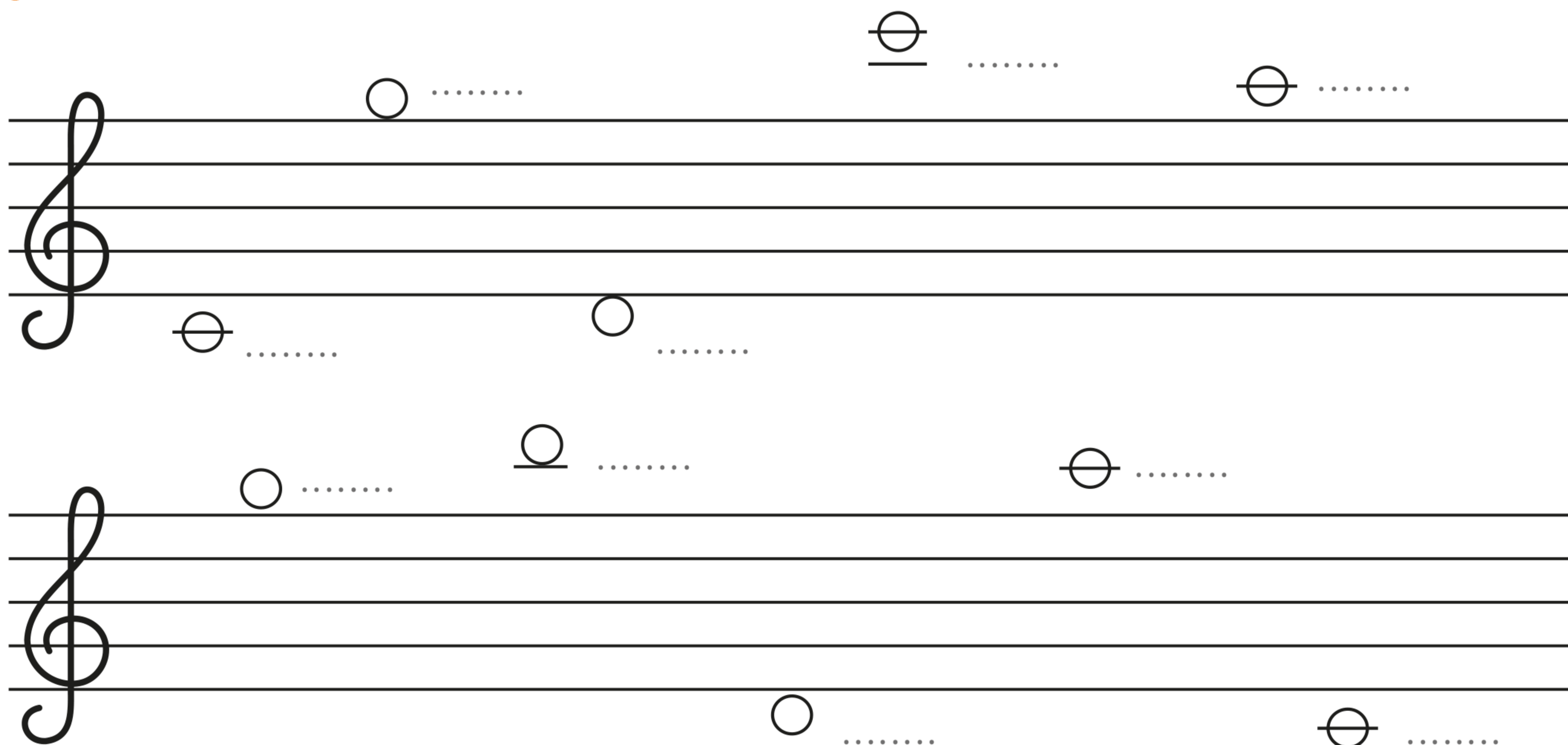


NOTE SOPRA IL PENTAGRAMMA

SOL LA SI DO

A musical staff with a treble clef. Above the staff, the text "NOTE SOPRA IL PENTAGRAMMA" is written. To the right, there are four notes: "SOL" (circle with horizontal line through center), "LA" (circle with horizontal line through center), "SI" (circle with horizontal line below), and "DO" (circle with horizontal line below).

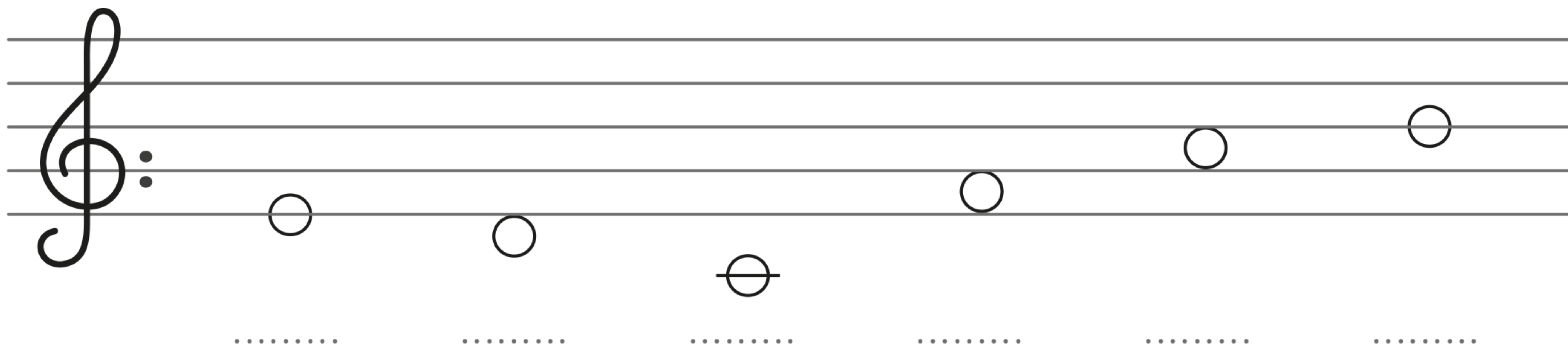
Scrive il nome alle note.



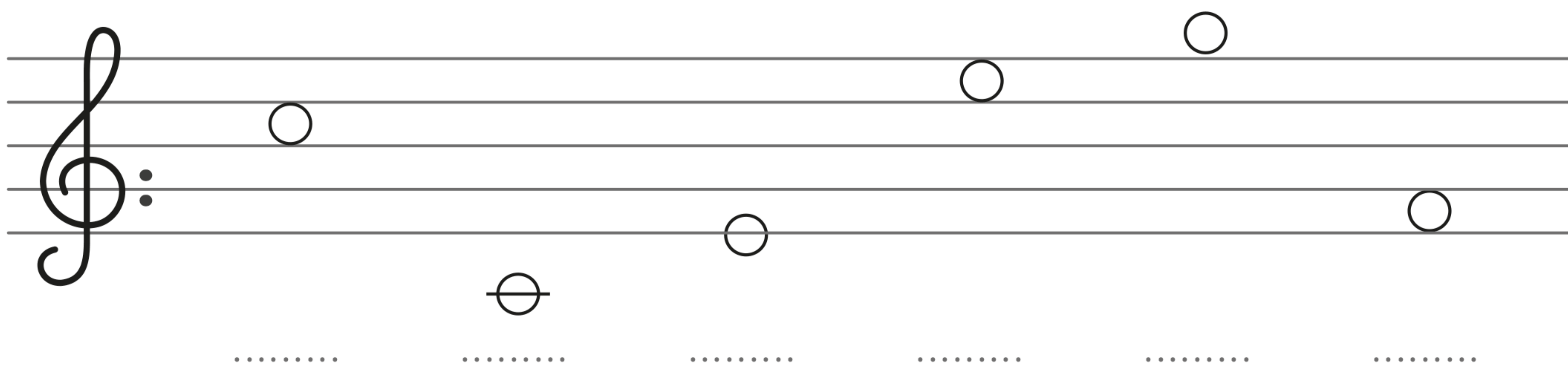
A musical staff with a treble clef. It contains several notes with dotted lines next to them for identification. The notes are: a circle with a horizontal line through the center, a circle with a horizontal line below, a circle with a horizontal line through the center, a circle with a horizontal line below, a circle with a horizontal line through the center, a circle with a horizontal line below, a circle with a horizontal line through the center, and a circle with a horizontal line below.

LE NOTE MUSICALI

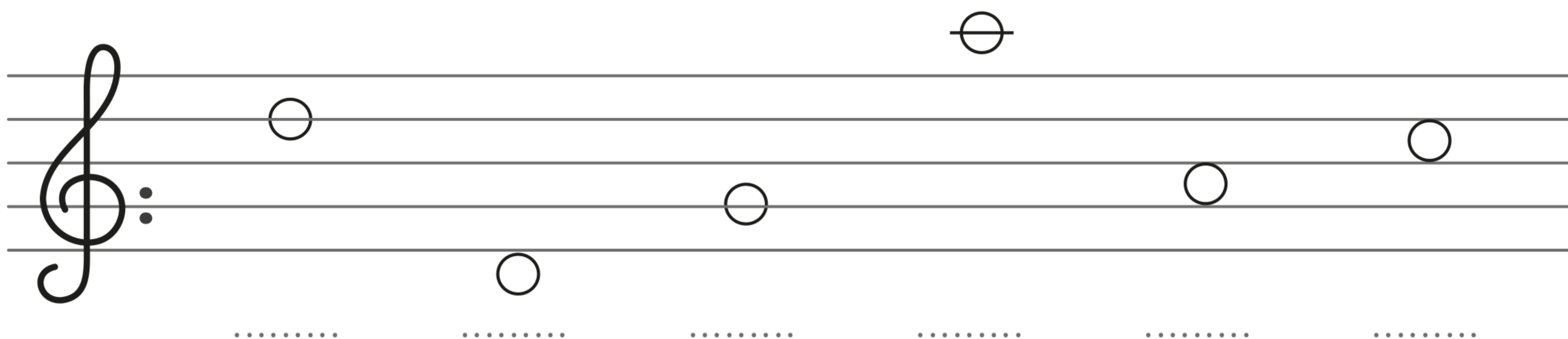
Scrivi il nome alle note.



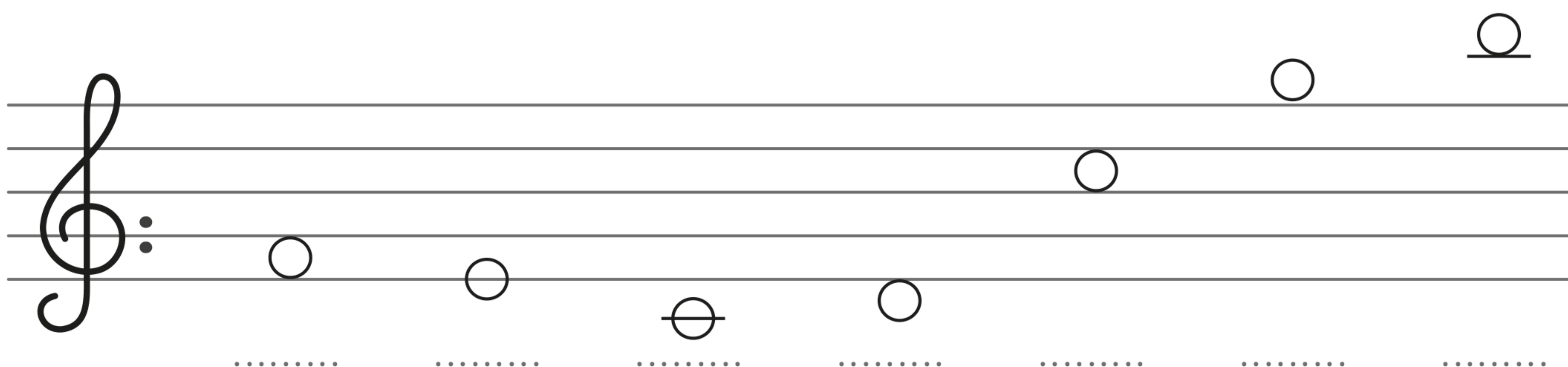
A musical staff with a treble clef and a colon. It contains six notes: a whole note on the first space (F), a whole note on the second line (G), a whole note on the second space (A), a whole note on the third line (B), a whole note on the third space (C), and a whole note on the fourth line (D). Below each note is a dotted line for labeling.



A musical staff with a treble clef and a colon. It contains six notes: a whole note on the first space (F), a whole note on the second space (A), a whole note on the second line (G), a whole note on the third line (B), a whole note on the third space (C), and a whole note on the fourth line (D). Below each note is a dotted line for labeling.



A musical staff with a treble clef and a colon. It contains six notes: a whole note on the first space (F), a whole note on the second space (A), a whole note on the second line (G), a whole note on the third line (B), a whole note on the third space (C), and a whole note on the fourth line (D). Below each note is a dotted line for labeling.



A musical staff with a treble clef and a colon. It contains six notes: a whole note on the first space (F), a whole note on the second space (A), a whole note on the second line (G), a whole note on the third line (B), a whole note on the third space (C), and a whole note on the fourth line (D). Below each note is a dotted line for labeling.