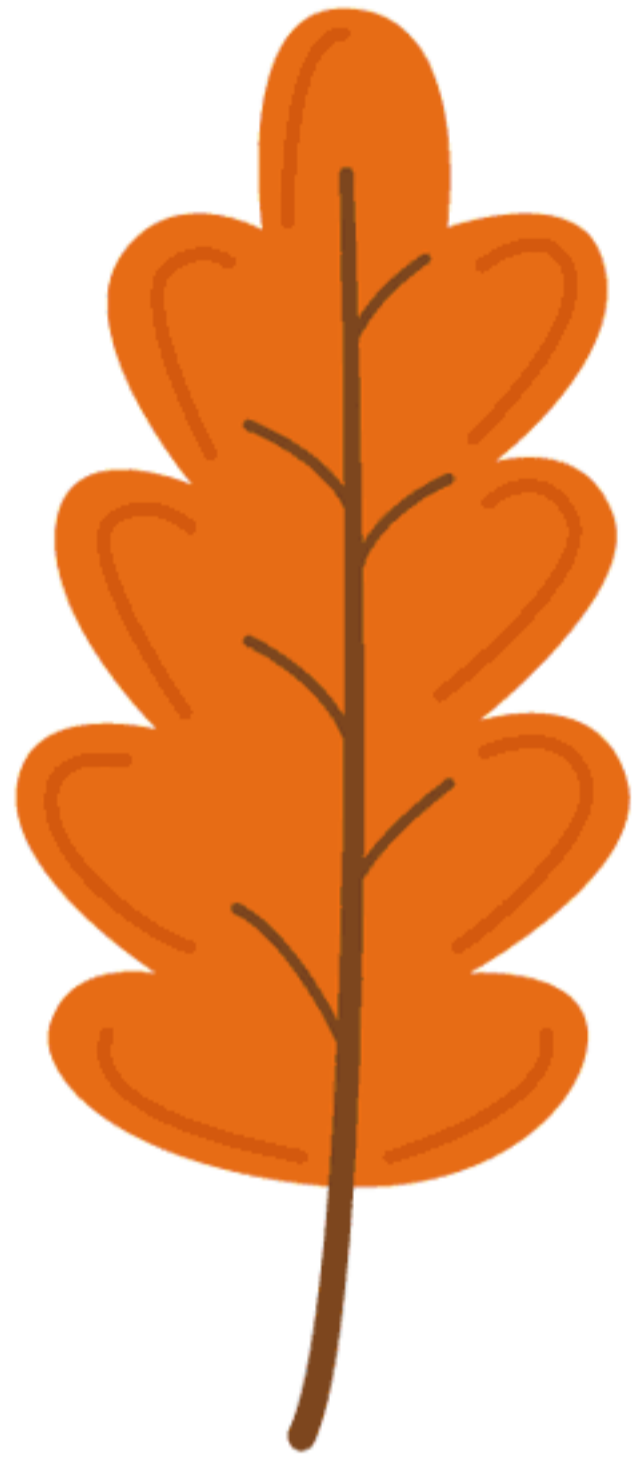
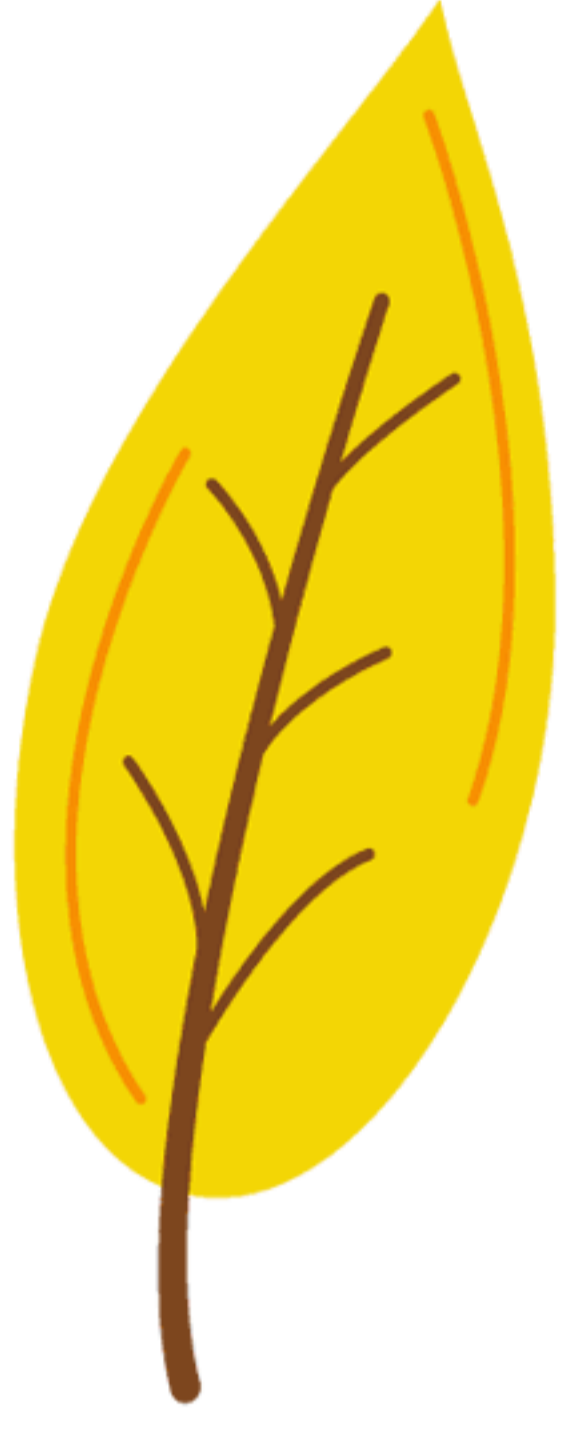
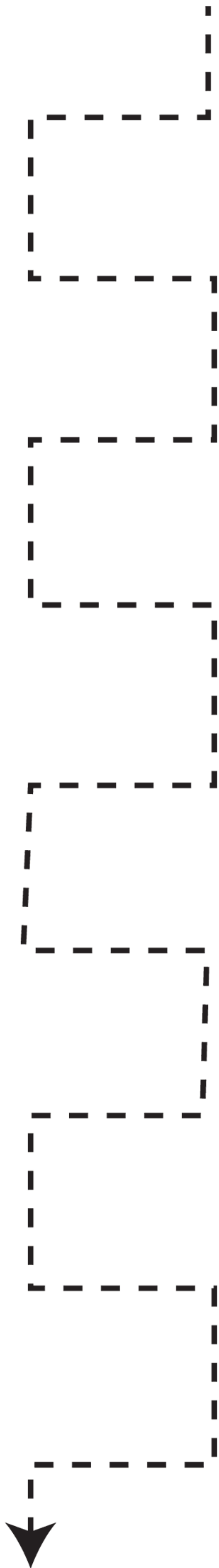


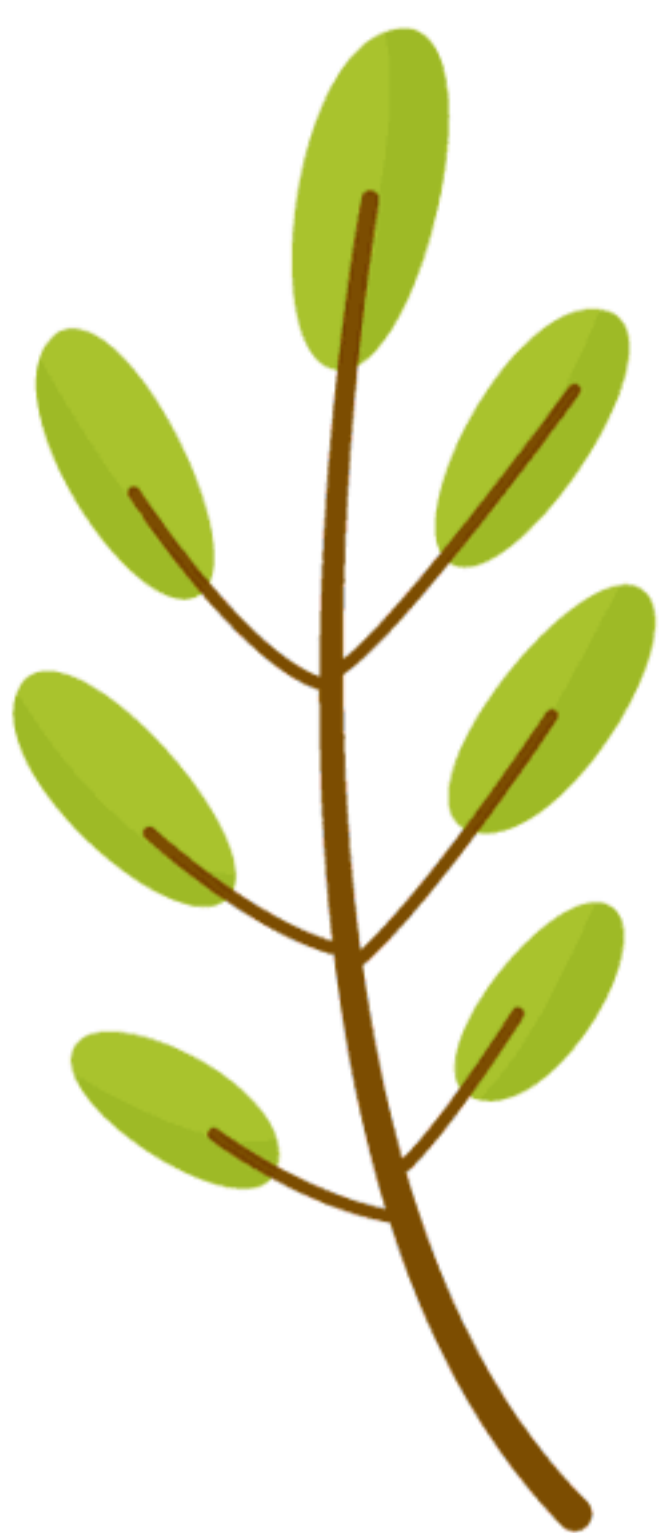
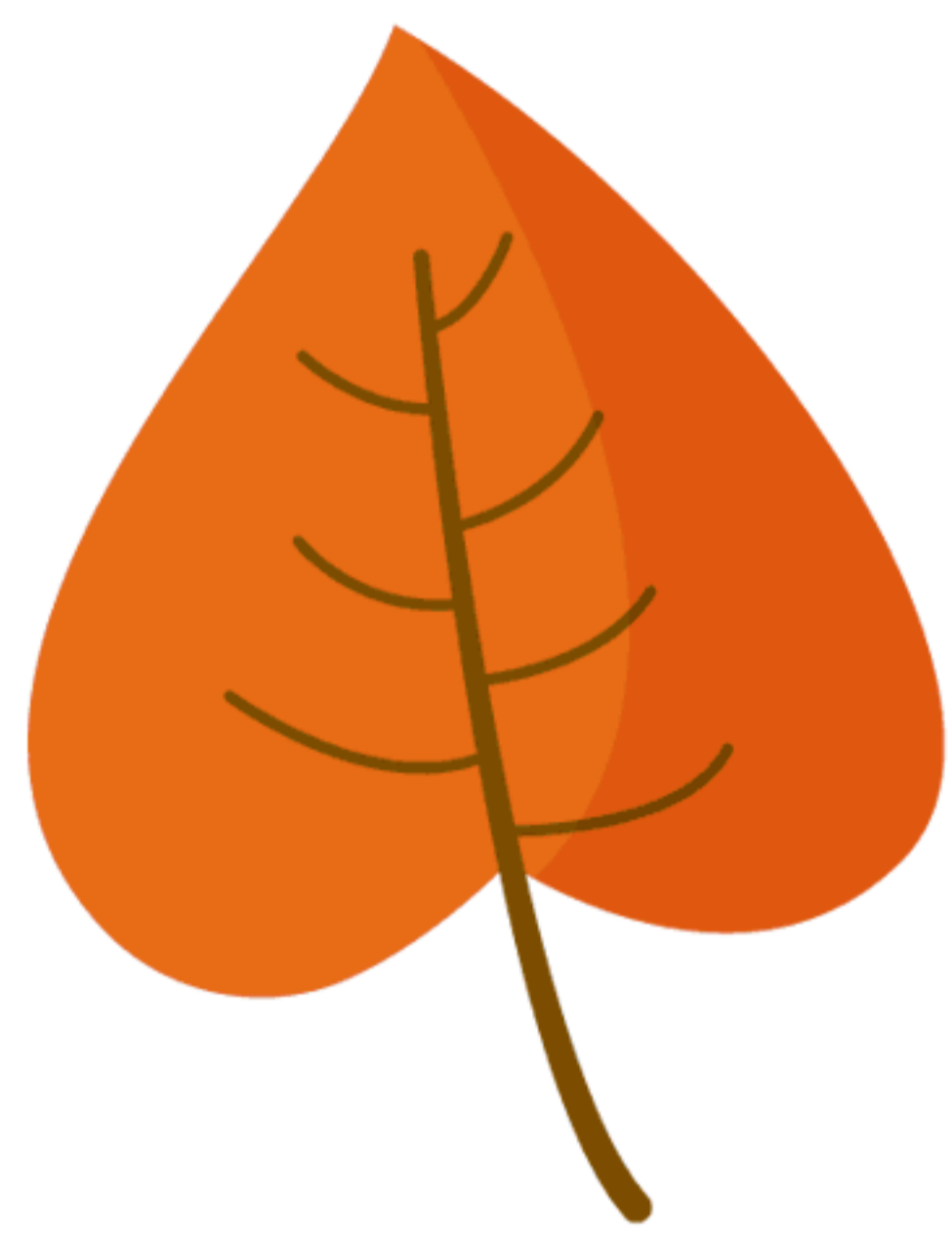
# AUTUNNO



# AUTUNNO



# AUTUNNO

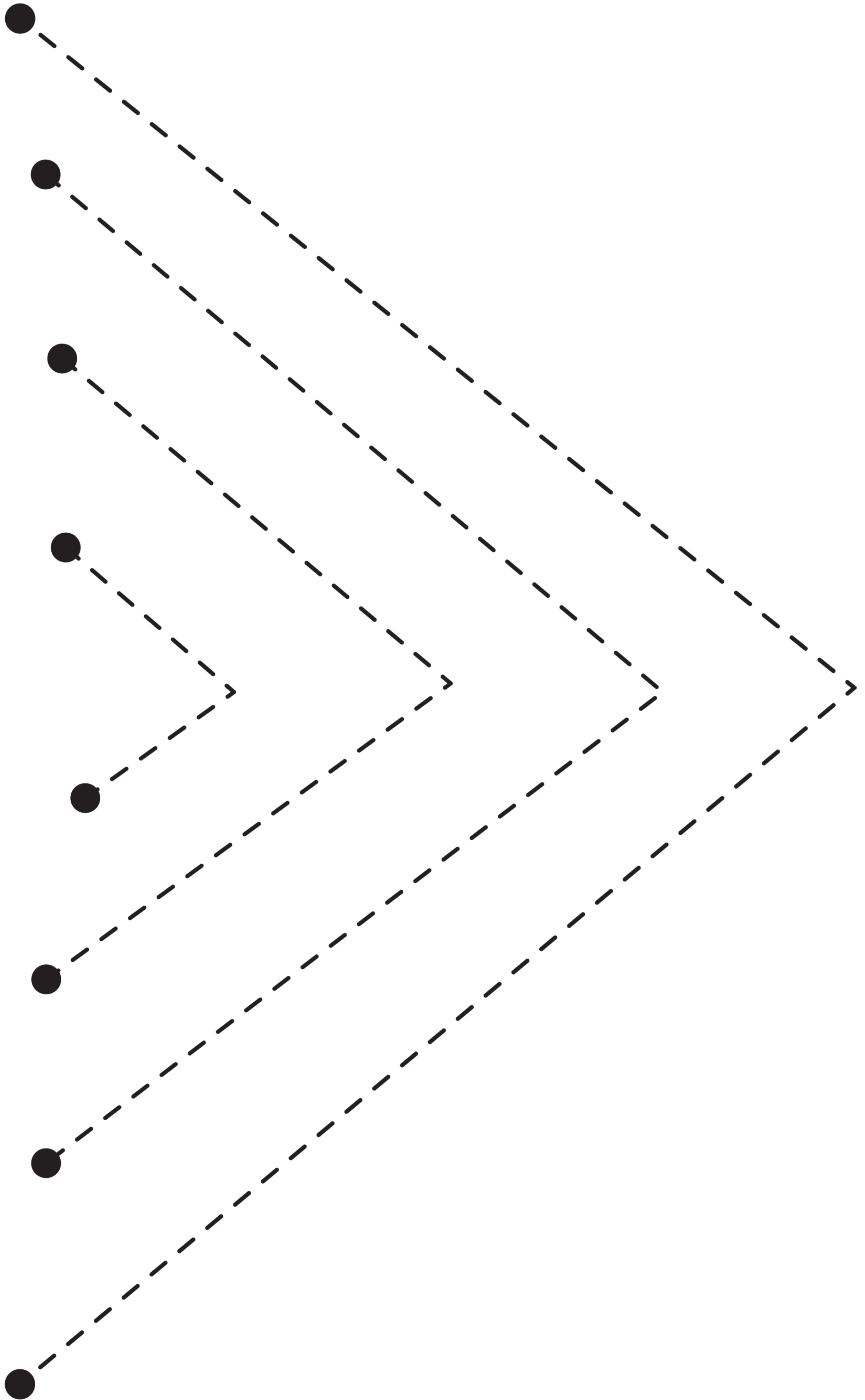
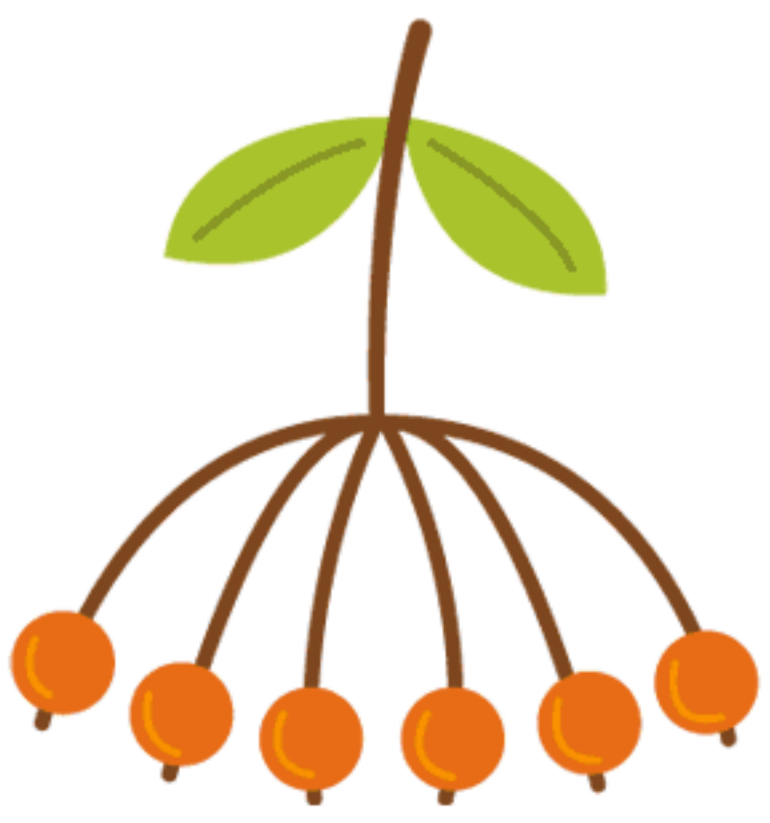
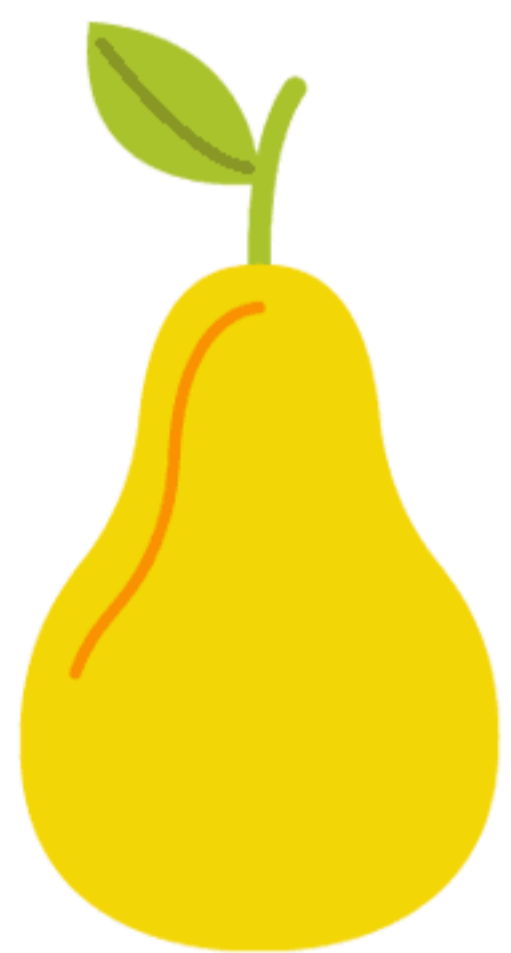
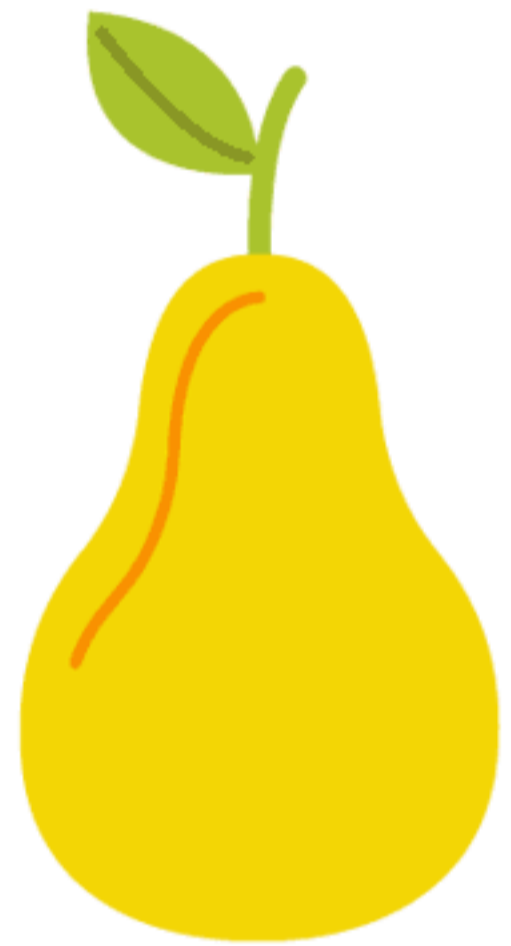
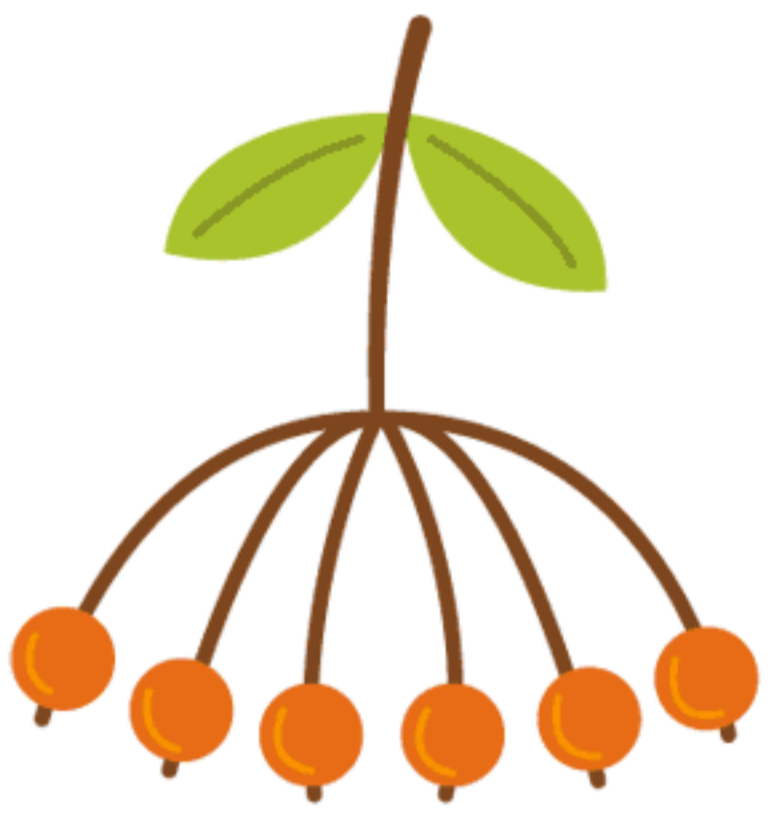


# AUTUNNO



Tracing practice area with eight dashed lines, each starting from a black dot on the left. The lines are arranged in a vertical column and form a series of nested, stepped rectangles. The first line is the longest, followed by a shorter one, then a shorter one, then a shorter one, then a shorter one, then a shorter one, then a shorter one, and finally the shortest one at the bottom.

# AUTUNNO



# AUTUNNO

