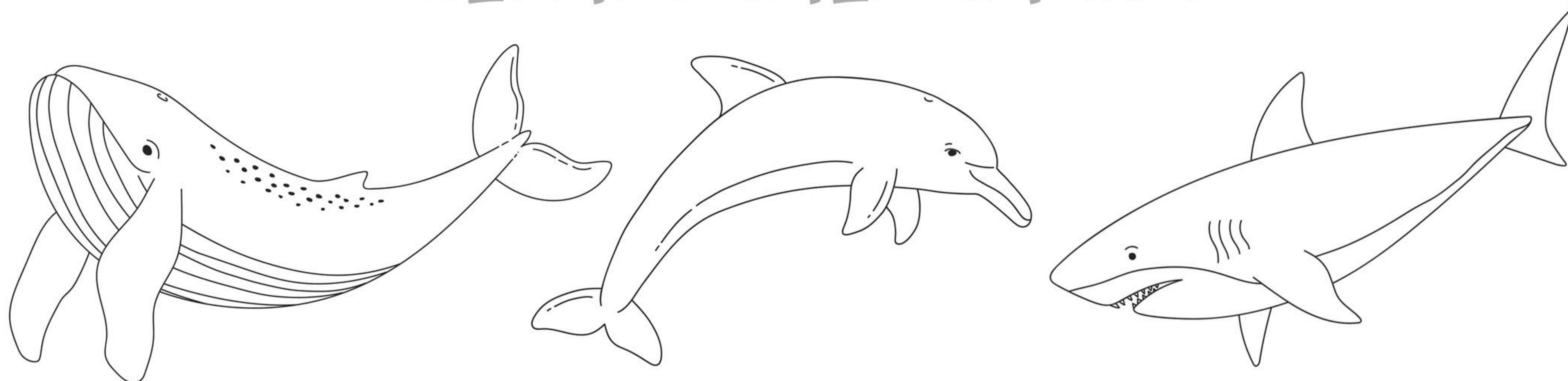
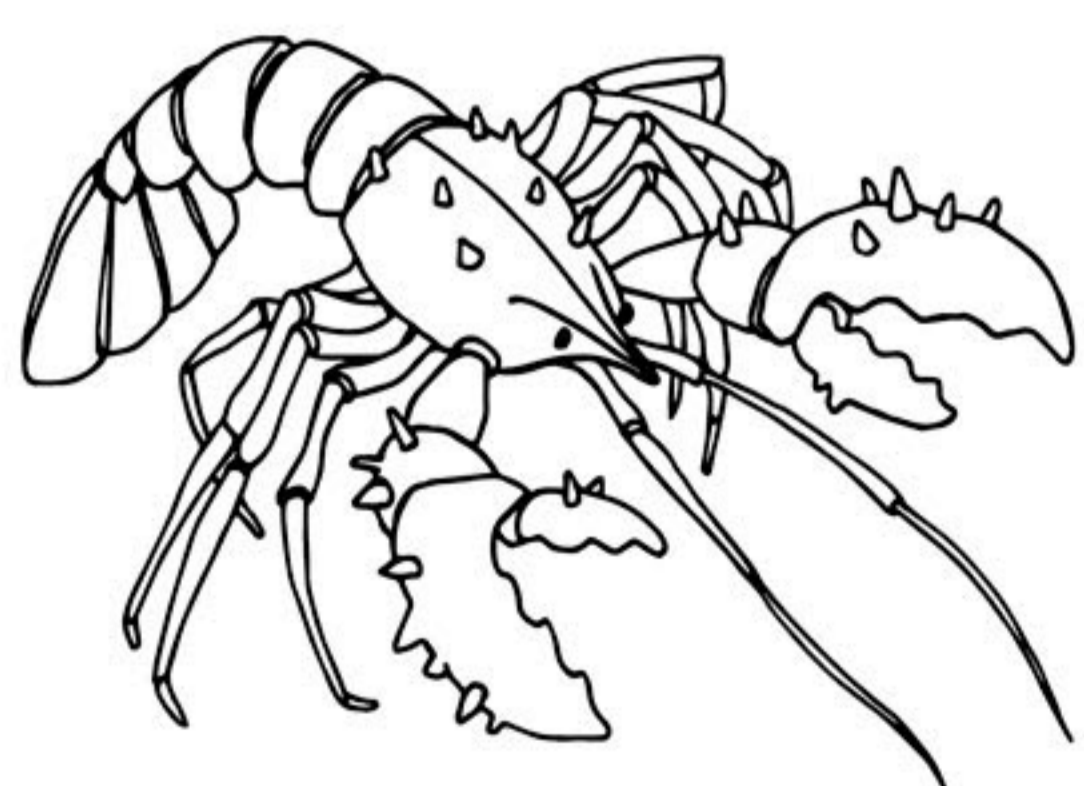


ESTATE

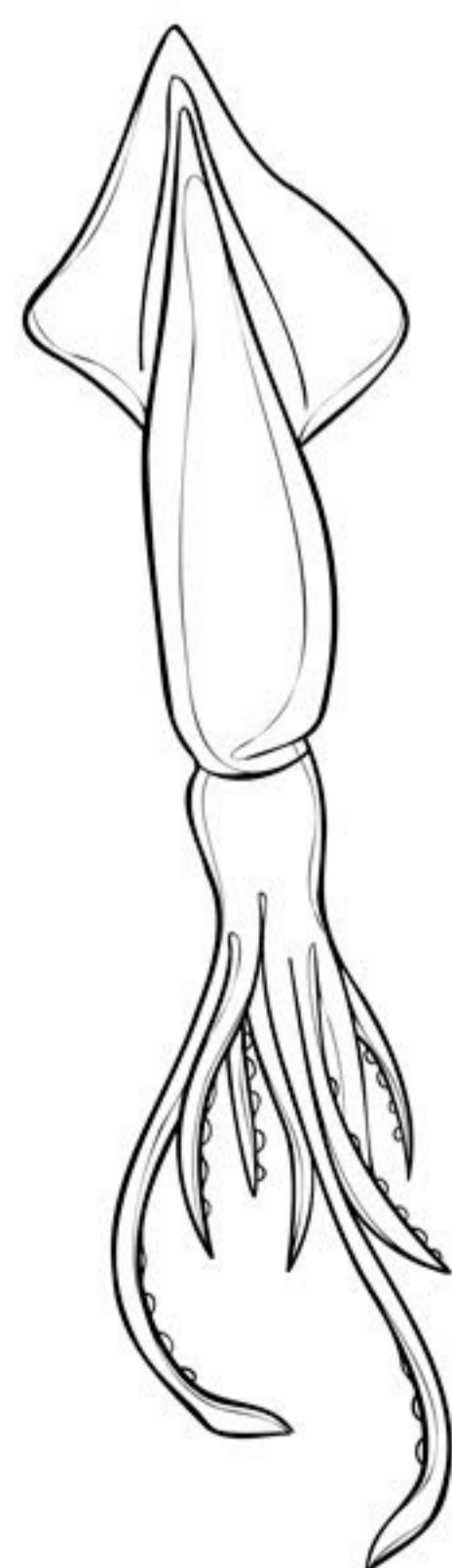
GLI ANIMALI MARINI



C . T A R T A R U G A G
A . . S Q U A L O . . R
L . . P O L P O . . . A
A S T I C E N
M . . . M E D U S A . C
A . . . D E L F I N O H
R . A R A G O S T A . I
O . B A L E N A . . . O



DELFINO
MEDUSA
ARAGOSTA
SQUALO
TARTARUGA



ASTICE
GRANCHIO
POLPO
CALAMARO
BALENA

