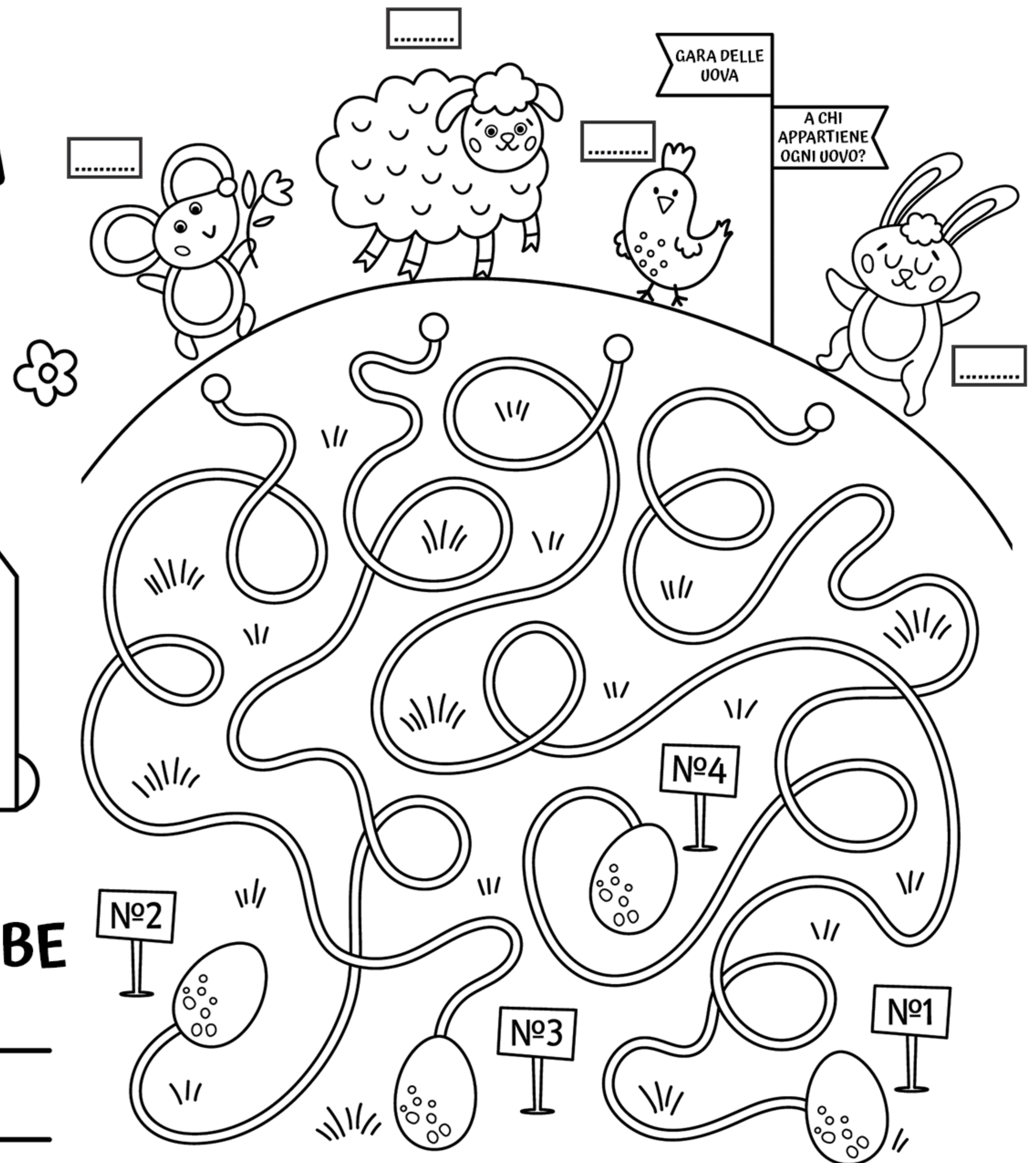
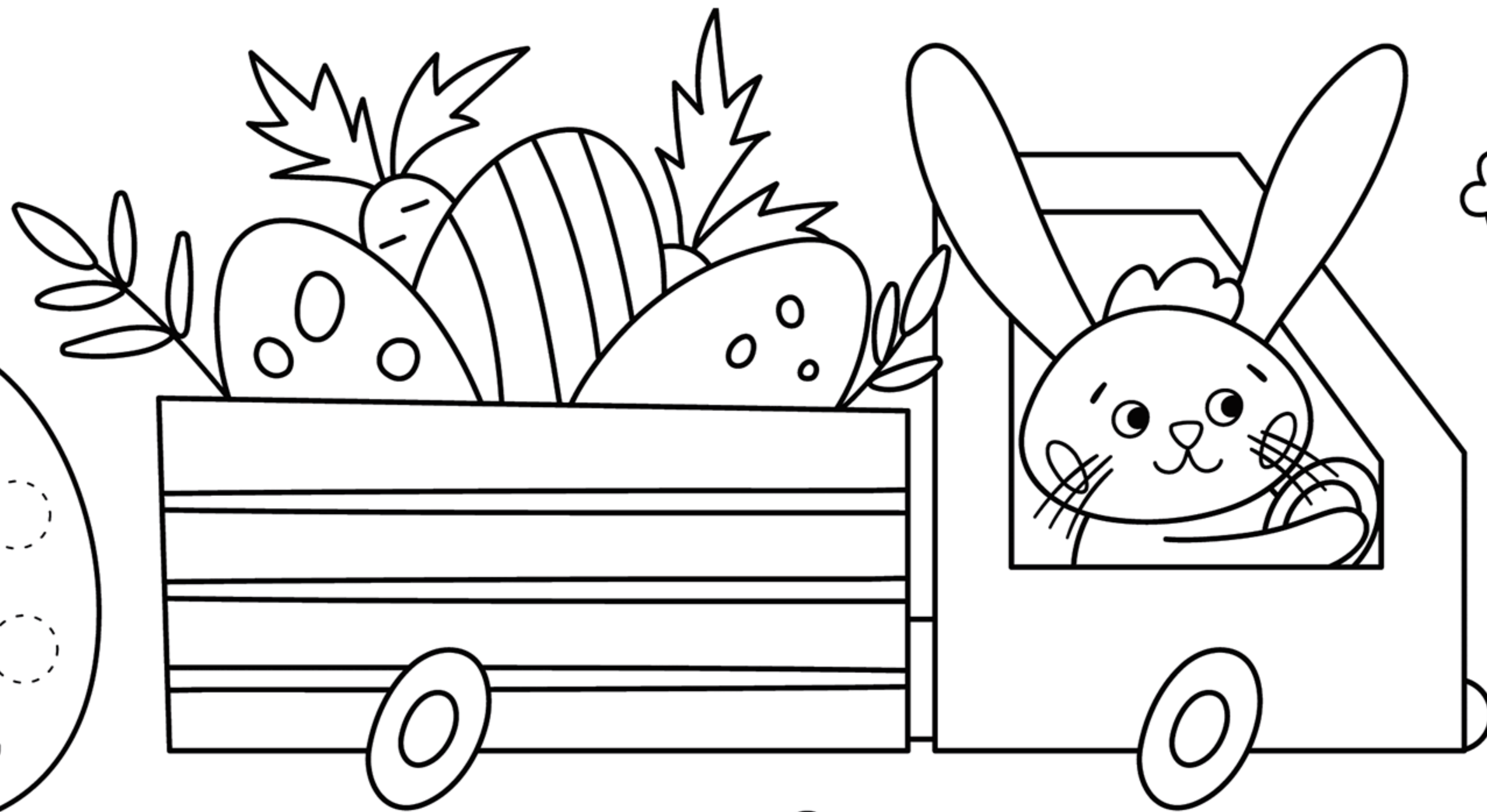
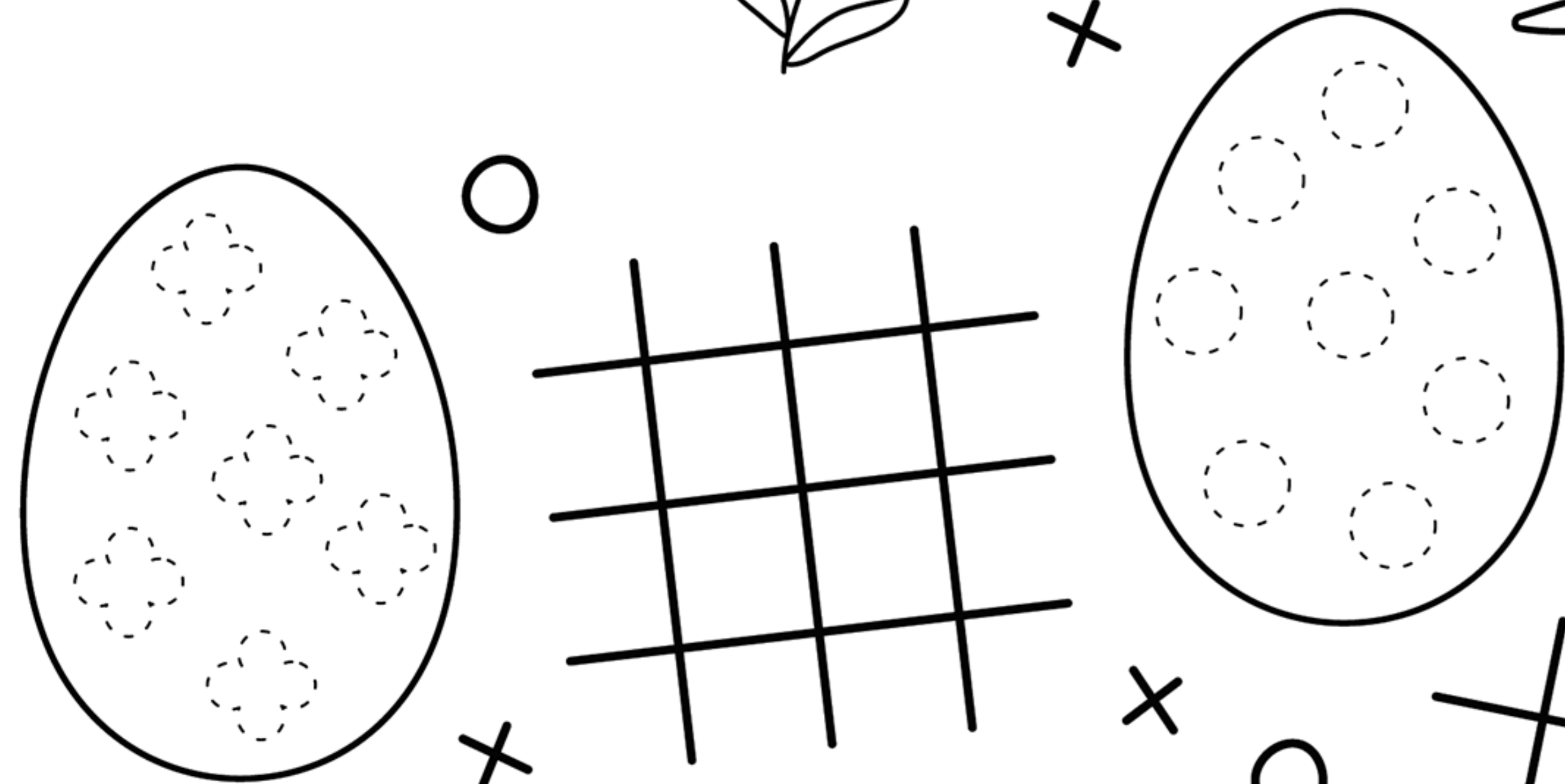
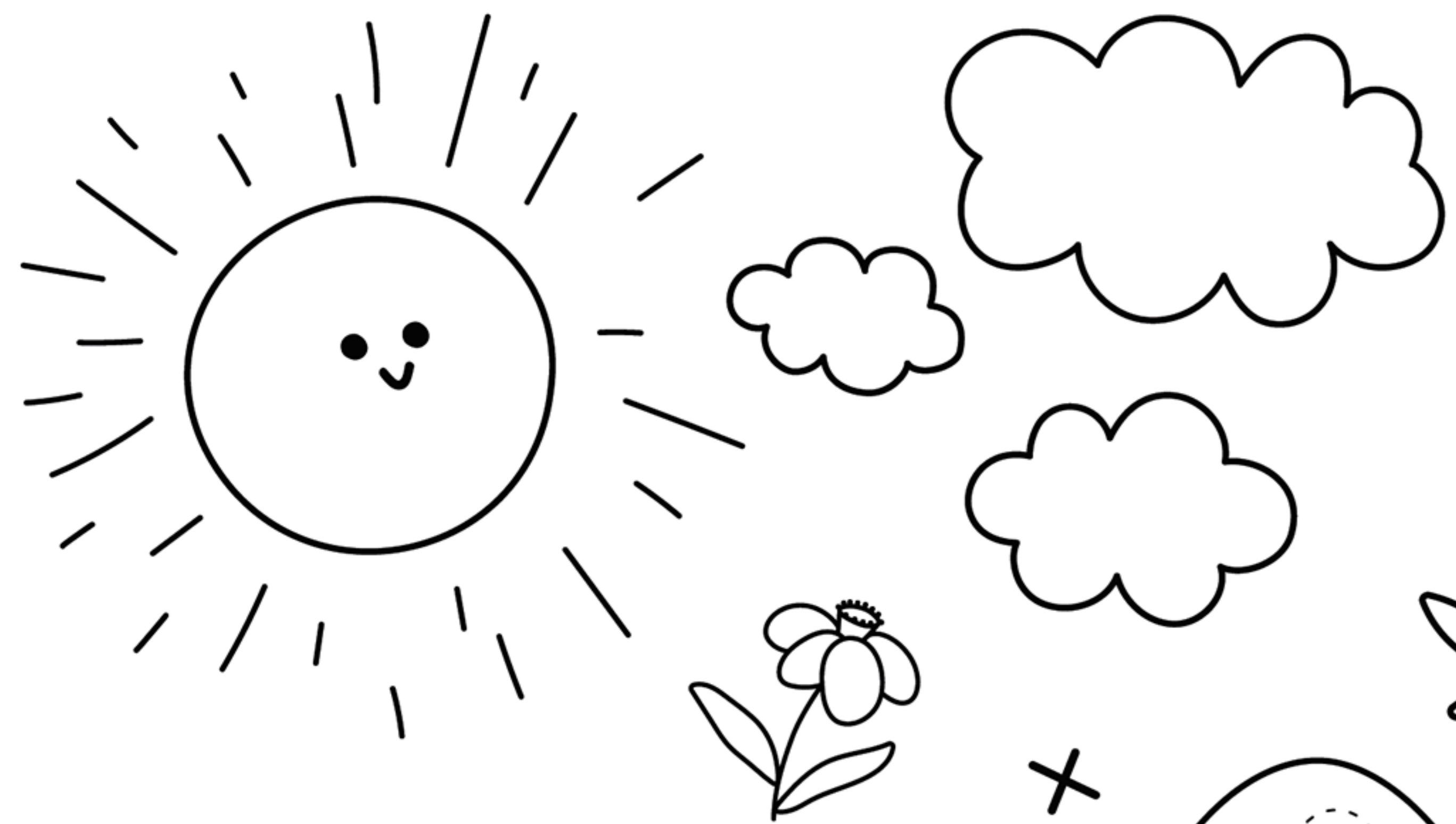
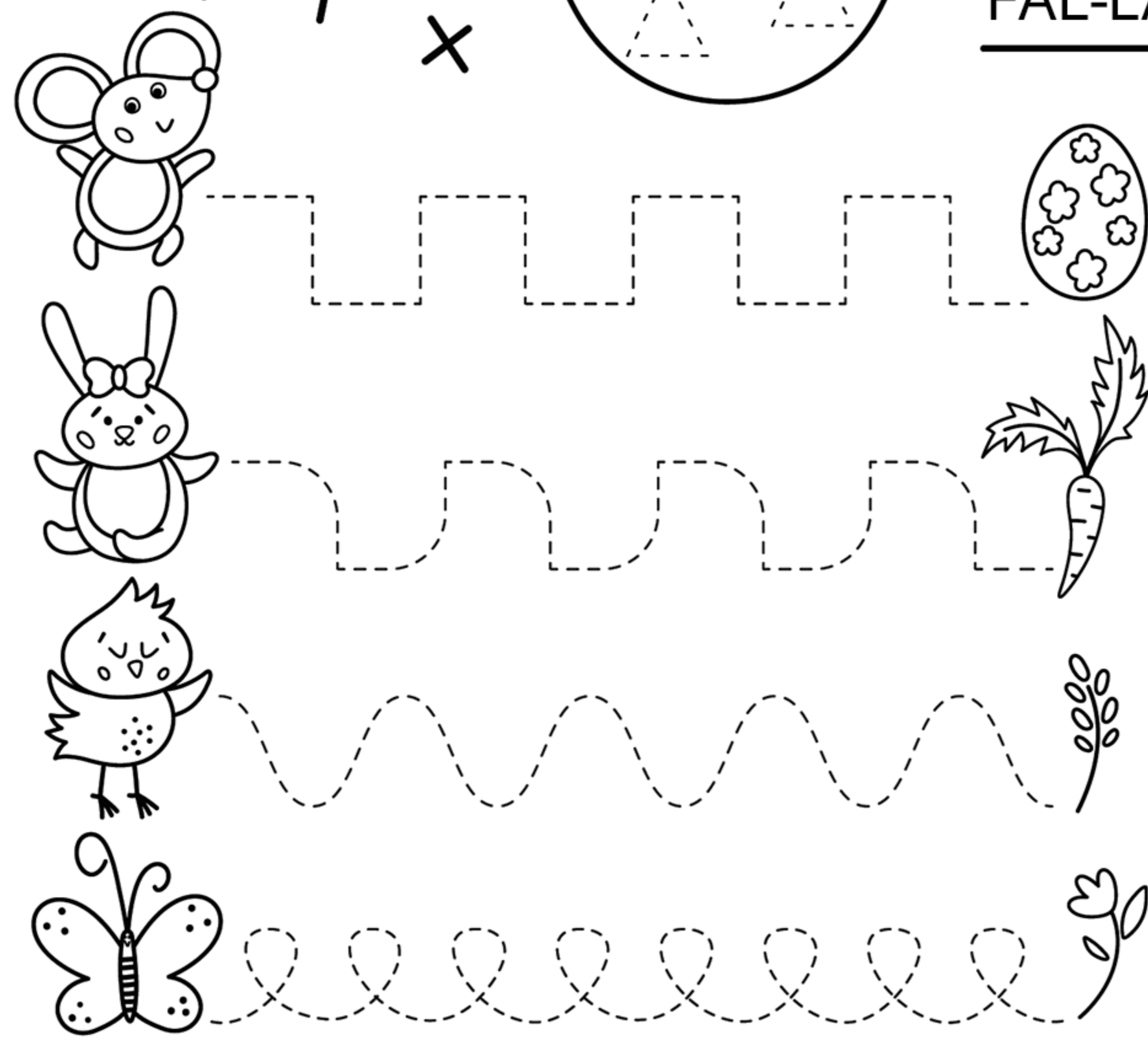
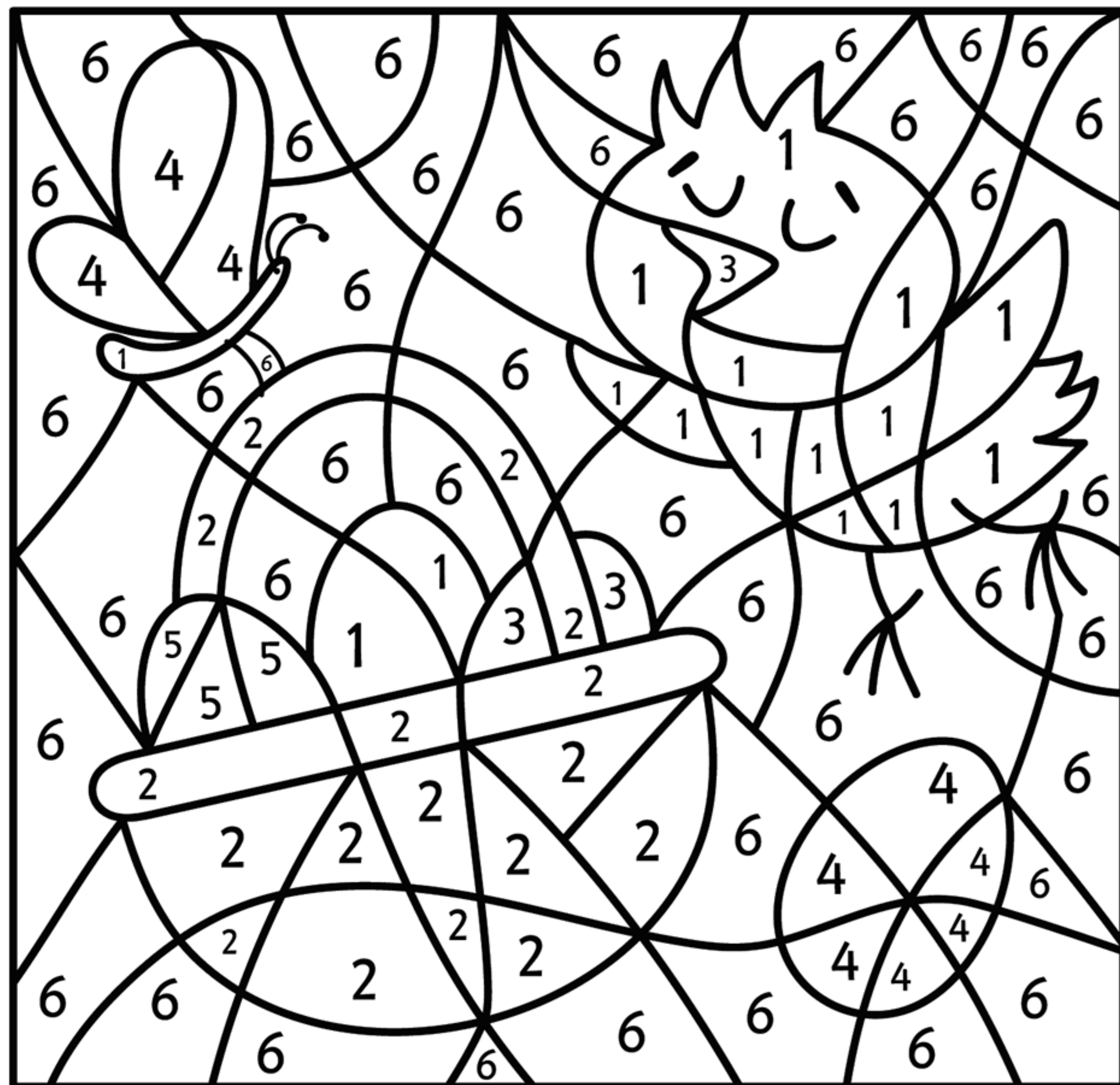


PASQUA



- 1
GIALLO
- 2
MARRONE
- 3
ROSSO
- 4
ROSA
- 5
BLU
- 6
VERDE



RIORDINA LE SILLABE

CI-NO-PUL = _____
 RA-CO-PE = _____
 FAL-LA-FAR = _____

INDIVIDUA TUTTE
LE UOVA E SCRIVI
IL LORO NUMERO

